

Somas HVV - Anti Clogging Valve

Designed for Reliable Control of Fluids with High Viscosity.

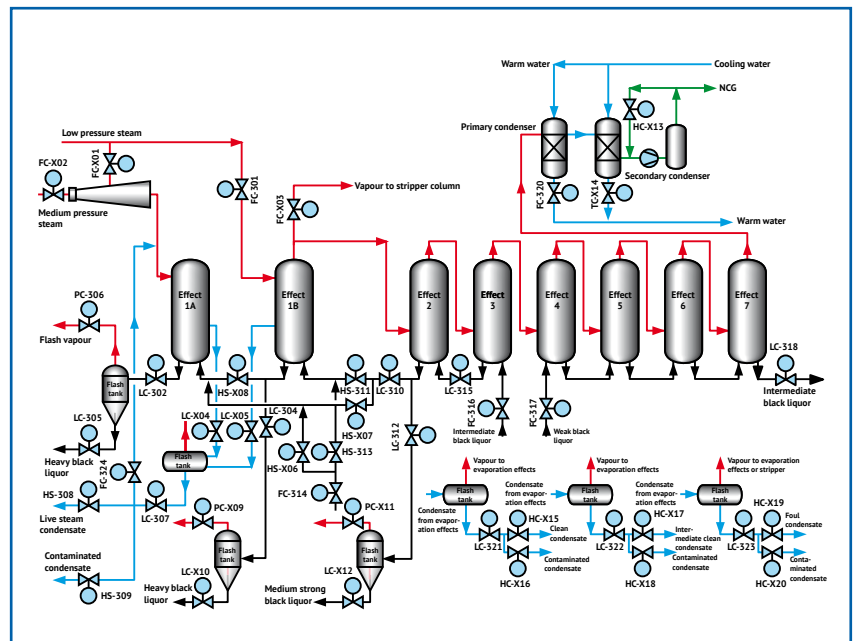
THE CHALLENGE AT PAPER MILLS

Paper mills include a wide range of challenging valve applications requiring both reliable operation and easy maintenance. The combination of mixed liquors with added chemicals and high temperatures as well, can result in clogging, which can in turn lead to poor valve performance or failure. These conditions are challenging for the control valves to prevent clogging and perform optimally.

CONTROL BALL SEGMENT VALVES

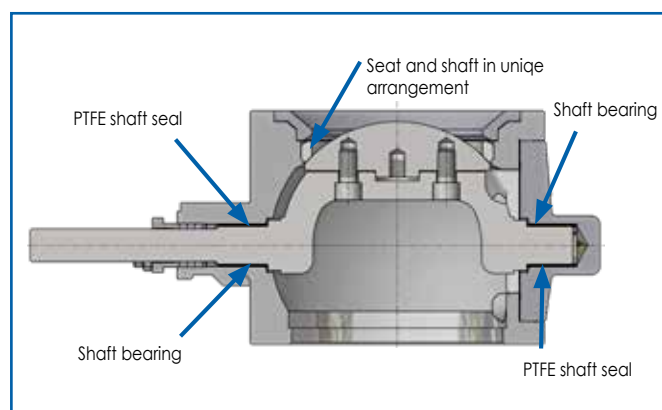
In response to this challenge, Somas customized its KVTW and KVTF Ball Segment Valves with unique arrangements of seats and shafts. Liquors and Lime Slurry's will be a challenge for any valve type. Somas Ball Segment Valves have PTFE shaft seals that prevent liquor from entering the bearing area. The shaft bearings ensure a smooth movement of the control valve shaft and acts as an extra safety in the event that Liquors or Lime Slurry does penetrate the area.

Somas anti-clogging ball segment valves are the ideal choice for high viscosity media due to their unique design characteristics.



GENERAL DATA

Fluids	Liquors, Lime Slurry
Valve type	KVTW, KVTF
Temperature	0-200°C
Dimensions	DN40/32-300
Pressure rating	PN10-40 (depending on DN)
Valve material	CF8M
Tightness class	Class IV



SUMMARY

- Experience and design improvements have resulted in robust valves which handle sticky media successfully.
- Unique arrangement with Seats and Shafts suited for liquor control.
- Proven performance in challenging and harsh environments.
- Ease of maintenance with replaceable seats, segments and shafts.

OPTIMAL FUNCTION IN APPLICATIONS

Somas actuators have been engineered to meet the process industry requirements for reliability and accuracy for control applications. The actuators are specifically made to fit the Somas range of valves and can easily be used with most 90° rotary valves.



FACTS SOMAS ACTUATOR

- Pressure range 4-5.5 bar (working pressure) maximum 8 bar pressure
- VDI/VDE 3845
- Lightweight, aluminum housing
- ISO 5211
- Backlash-free

EDP 300 ELECTRO-PNEUMATIC SMART POSITIONER

The PositionMaster EDP300 is an electronically configurable positioner with communication capabilities designed for mounting to linear or rotary actuators. Advanced performance 4 to 20 mA with HART. It has a fully automatic determination of the control parameters and adaptation to the positioner allow for considerable time savings as well as optimum control behaviour. Because of its properties, the positioner is suited for even the most challenging operating conditions.



WHAT ABOUT THE FUTURE?

To avoid unplanned shutdowns and to ensure the reliability of your valves, condition-based monitoring is the future. It will help you to monitor the condition of your valves and instruments. This allows you to predict and plan your maintenance activities accordingly. Unnecessary maintenance is a waste of both time and money.

SomAware® gives you access to our digital capabilities. We offer products, systems, solutions, services, and a platform that allows you to know more, do more and increase your valves' performance. SomVerify® allows you to monitor your valves 24/7 in order to ensure high reliability and performance, and to anticipate maintenance requirements.

Are you ready to adapt to new technology and services?

Please talk to us about our valve monitoring service and SomVerify®.

Have your most critical control valves monitored by Somas!

Somas Instrument AB
Box 107, SE-661 23
SÄFFLE, SWEDEN
www.somas.se

SOM  **AWARE®**