



Install and adjust seat for MTV / VSS

Mi-235 EN

Changing the PTFE seat on SOMAS Butterfly valves MTV / VSS

Edition: 2013-01

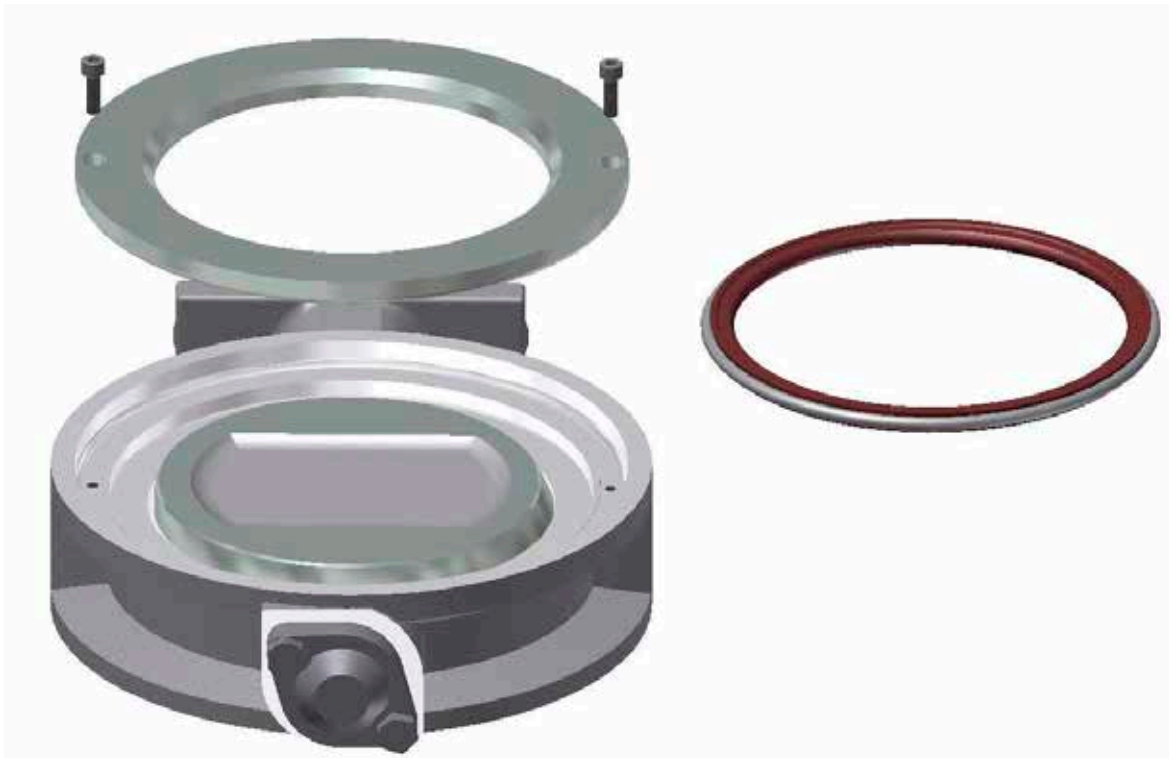




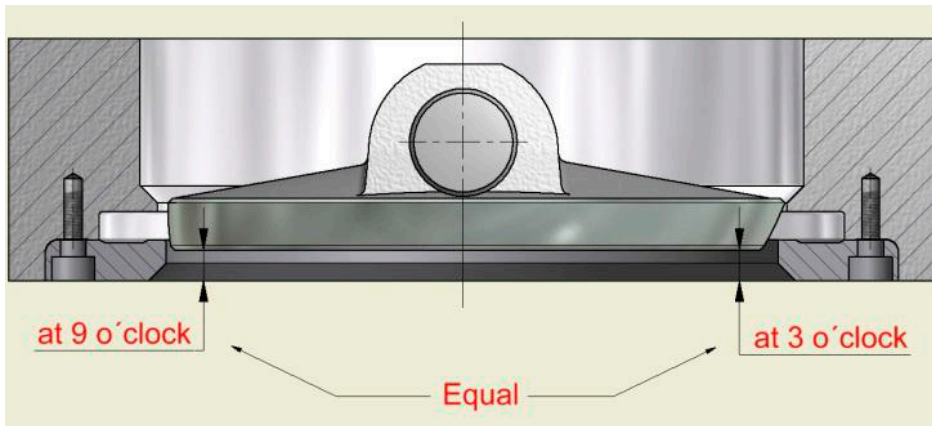
The instruction below covers how to change PTFE seat and adjust the valve when no proper pressure testing is possible.

After a change of valve seat the valve preferably should be adjusted based on a pressure testing. This means that the closed position end stop is adjusted to the point when the leak stops. If this adjustment should be used it is important that the cover plate get the correct pressure. Correct pressure on the cover plates means that the pressure on the cover plate should be the same as the pressure the valve gets when it is installed in the pipe. If the correct pressure on the cover plate not can be guaranteed the procedure below should be followed.

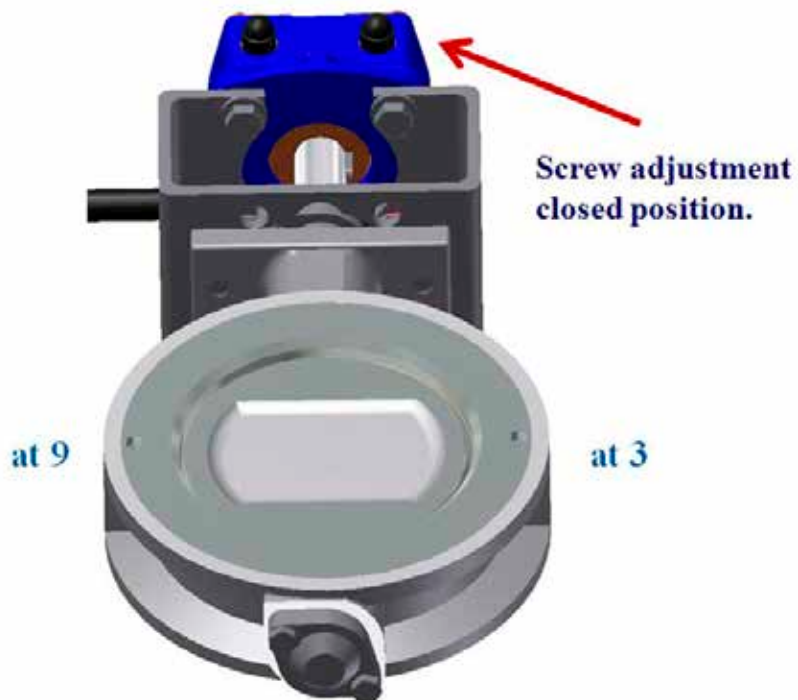
1 Level the disc



1-1 Remove the seat.



1-2 Install the cover plate and measure the distance from the cover plate to the disc at 3 and 9 o'clock positions.

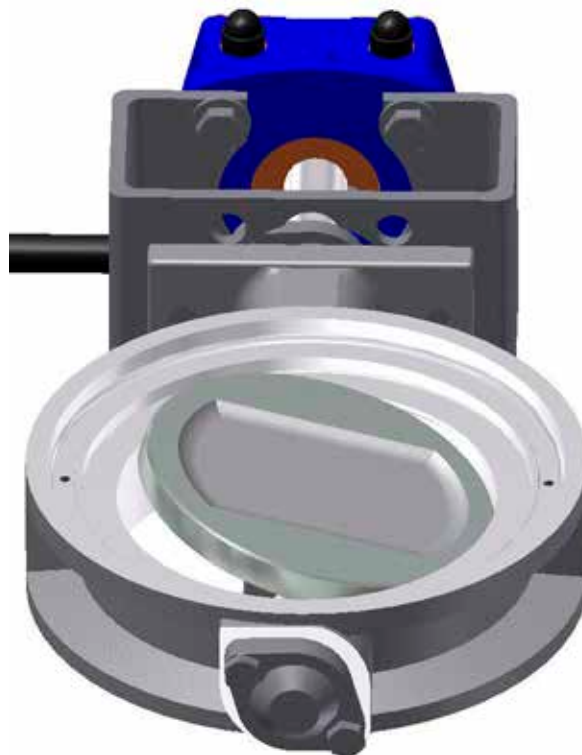


1-3 Adjust the worm gear so that the dimensions between the cover plate and disc are equal at 3 and 9 o'clock.

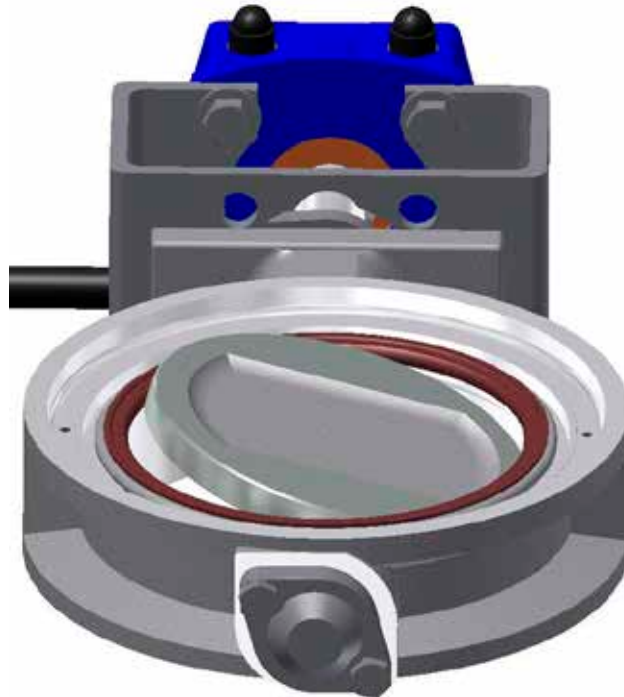


1-4 Remove the cover plate.

2 Install the new seat



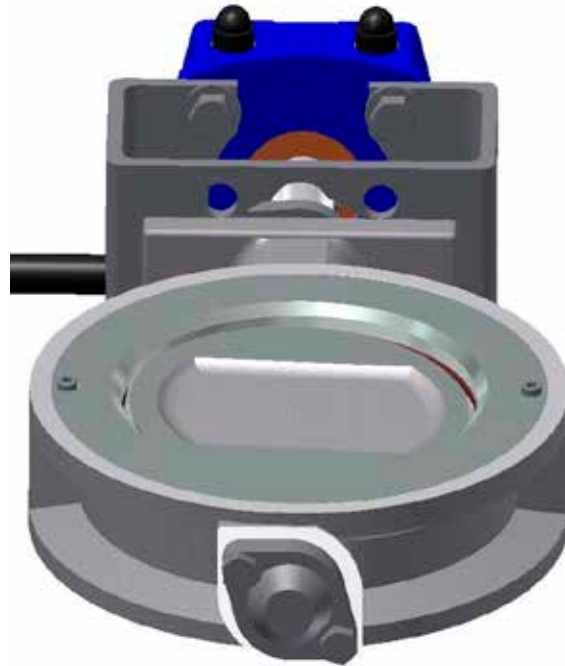
2-1 Open the valve about 10 to 15°.



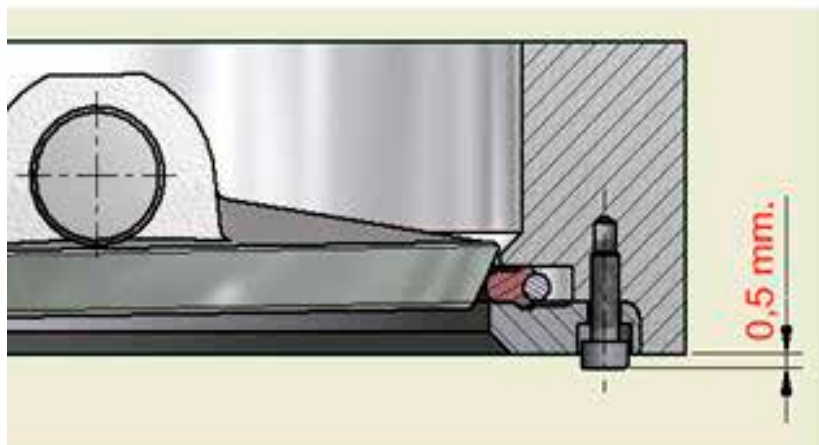
2-2 Position the seat as shown.

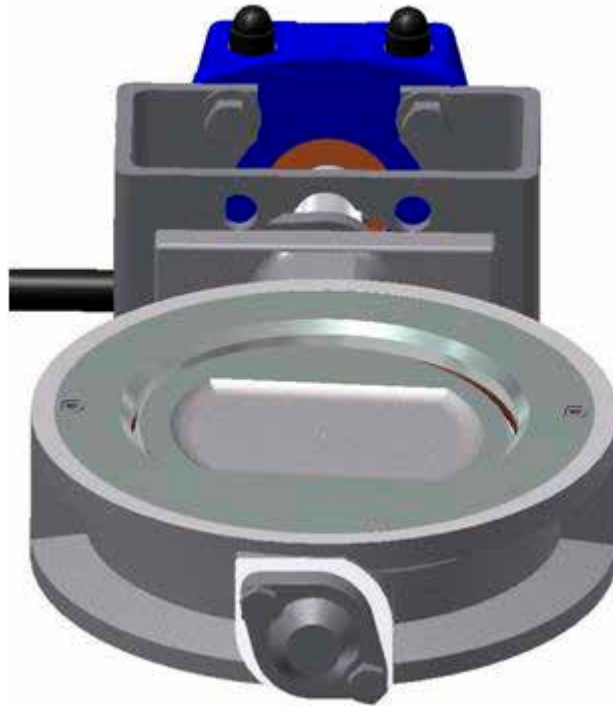


2-3 Reinstall the cover plate and screws.

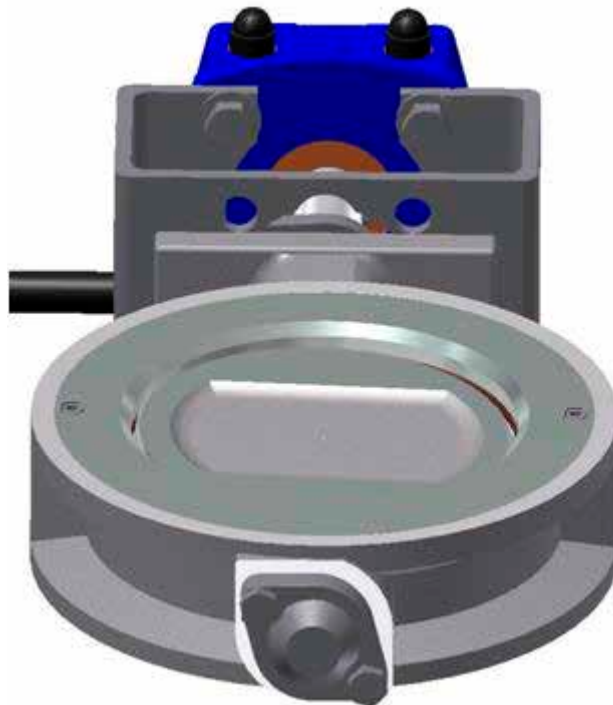


2-4 The screws are screwed down until about 0,5 mm of screw is above the cover plate surface.





2-5 Move the valve almost to closed position. Tighten the screws fully.



2-6 Close the valve. Open the valve some degrees. Pull the screws further if it is possible.



SOMAS Instrument AB
Norrlandsvägen 26
SE-661 40 SÄFFLE
Sweden

Phone: +46 (0)533-167 00
Fax: +46 (0)533-141 36
E-mail: sales@somas.se



www.somas.se

