

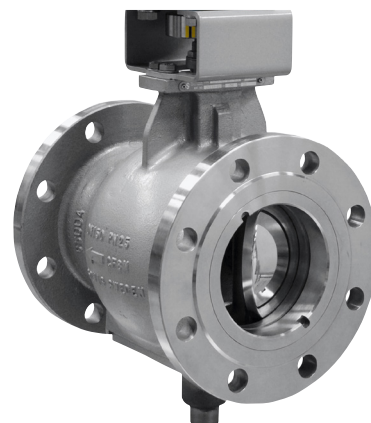
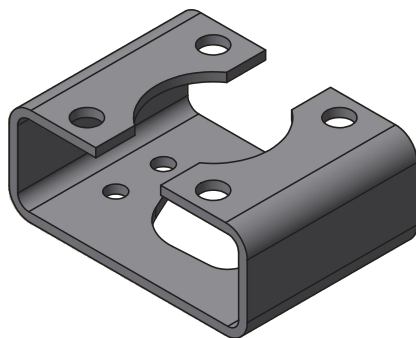
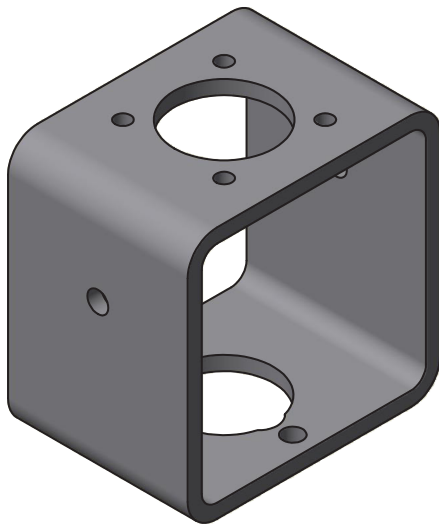
Technical information

Attachment standard - Mounting kits

Ti-927 EN

Edition: 2025-06

Somas valves attachment standard of mounting kits for actuators and gear boxes





Ball segment valve - Selection tables

KVT

KVT PN25	No.
DN25	B01
DN40	B02
DN50	B03
DN65	B04
DN80	B19
DN100	B19
DN150	B07
DN200	B08
DN250	B09
DN300	B10
DN350	B11
DN400	B12
DN500	B13
DN600	B14
DN700	B18

KVT PN50	No.
DN25	B01
DN40	B02
DN50	B03
DN65	B04
DN80	B07
DN100	B21
DN150	B09
DN200	B10
DN250	B11
DN300	B12



KVT PN100	No.
DN25	B05
DN40	B05
DN50	B06
DN80	B07
DN100	B21
DN150	B10

KVTW

KVTW-A/-D PN25	No.
DN25	B01
DN40	B02
DN50	B03
DN65	B19
DN80	B19
DN100	B19
DN150	B20
DN200	B21
DN250	B23



KVTF

KVTF PN25	No.
DN25	B02
DN40	B02
DN50	B02
DN80	B19
DN100	B19
DN125	B20
DN150	B21
DN200	B23
DN250	B24
DN300	B26
DN350	B27
DN400	B28
DN500	B14
DN600	B42

KVTF-C PN25	No.
DN80	B19
DN100	B19
DN150	B20
DN200	B21
DN250	B23
DN300	B24
DN350	B26
DN400	B27

KVTF PN50	No.
DN25	B02
DN40	B02
DN50	B02
DN80	B20
DN100	B20
DN150	B22
DN200	B25
DN250	B26





Butterfly valve - Selection tables

VSS

VSS serie -02

PN50	No.
DN80	B05
DN100	B07
DN150	B08
DN200	B09
DN250	B10
DN300	B11
DN350	B12
DN400	B13
DN450	B13
DN500	B14
DN600	B15

VSS serie -02

PN100	No.
DN100	B07
DN150	B08
DN200	B09
DN250	B10
DN400	B65

VSS serie -04

PN25	No.
DN80	B05
DN100	B05
DN125	B05
DN150	B07
DN200	B07
DN250	B08
DN300	B09

VSS serie -04, -05

PN25	No.
DN350	B10
DN400	B11
DN450	B11
DN500	B12
DN600	B13
DN650	B13
DN700	B13
DN750	B13
DN800	B14
DN900	B15
DN1000	B16
DN1200	B17

VSS serie -05

PN25	No.
DN80	B38
DN100	B38
DN125	B38
DN150	B39
DN200	B39
DN250	B40
DN300	B41

MTV

MTV PN25	No.
DN80	B19
DN100	B19
DN125	B19
DN150	B20
DN200	B20
DN250	B21
DN300	B23
DN350	B24
DN400	B26
DN500	B27

MTV HT

MTV HT PN10	No.
DN80	E19
DN100	E19
DN125	E19
DN150	E20
DN200	E20
DN250	E21
DN300	E23
DN350	E24
DN400	E26

VSS HT

VSS HT PN10	No.
DN80	E38
DN100	E38
DN125	E38
DN150	E39
DN200	E39
DN250	E40
DN300	E41
DN350	E10

SPV

SPV PN10	No.	Short shaft
DN80	E48	B19
DN100	E49	
DN125	E50	
DN150	E51	
DN200	E52	
DN250	E53	B53
DN300	E51	
DN350	E55	

VSS HT PN10	No.	Short shaft
DN400	E11	B64
DN450	E11	
DN500	E12	B66
DN600	E44	
DN700	E44	
DN800	E44	
DN900	E44	
DN1000	E45	
DN1200	E45	

SPV PN10	No.
DN400	E56
DN500	E57
DN600	E58
DN700	E59
DN800	E60
DN900	E61
DN1000	E62
DN1200	E62/E63





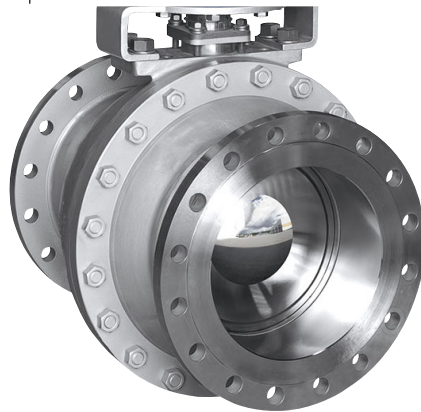
Ball valve - Selection tables

SKV

SKV PN50	No.
DN25	B02
DN40	B02
DN50	B19

SKV, SKVT

SKV, SKVT PN25	No.
DN80	B29
DN100	B30
DN125	B31
DN150	B32
DN200	B33
DN250	B34
DN300	B35
DN350	B36
DN400	B37
DN500	B42





Appearance 1

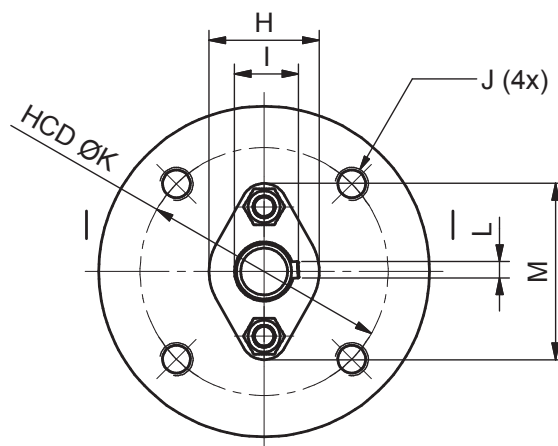
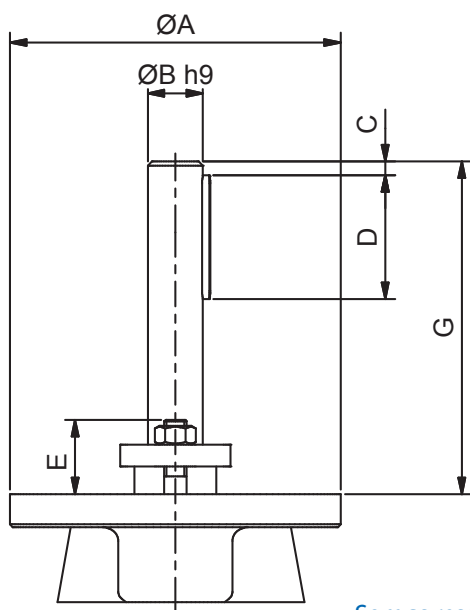
No.	A	B	C	D	E	G	H	I	J*	K (HCD)	L	M
B01	75	15	3	35	25	62	28	17	M6	60	5	50
B02	95	15	3	35	25	64	28	17	M8	80	5	50
B03	105	15	3	35	25	64	28	17	M8	80	5	50
B04	132	20	5	45	40	120	44	22.5	M12	90	6	74
B05	120	20	5	45	40	120	44	22.5	M12	90	6	74
B38	120	20	5	45	30	120/230**	44	22.5	M12	90	6	61
B06	135	20	5	45	40	120	44	22.5	M12	105	6	74
B07	120	25	5	45	40	120	50	28	M12	90	8	78
B39	120	25	5	45	30	120/225**	45	28	M12	90	8	60
B08	150	30	5	60	50	135	58	33	M12	120	8	92
B40	150	30	5	60	30	135/241**	50	33	M12	120	8	72
B09	150	35	5	50	50	135	64	38	M12	120	10	100
B41	150	35	5	50	40	135/255**	55	38	M12	120	10	75
B10	150	40	5	50	50	135/265**	70	43	M12	120	12	108
B11	150	50	10	80	50	200/284**	82	53.4	M12	120	14	124
B12	200	60	10	90	60	210/340**	96	64	M16	160	18	147
B13	200	70	10	110	60	225	112	74.5	M16	160	20	162
B14	200	80	10	120	76	245	120	85	M16	160	22	183
B15	200	80	10	120	76	245	120	85	M20	160	22	183
B16	250	80	10	125	72	245	195	85	M20	205	22	195
B17	250	100	10	125	72	245	195	106	M20	205	28	195
B18	250	100	10	125	72	255	195	106	M20	205	28	195
B42	258	80	5**** 10	160	80	350	120	85 90***	M20	205	22	185
B46	250	70	10	110	90	311	195	74,5	M20	205	20	195
B65	200	70	10	110	62	241	112	74,5	M20	160	20	162

* Minimum thread fastening 1xØ, Maximum 1.5xØ.

** Dimension for valves with extended shaft, Code "E.." instead of "B.."

*** Two keys on SKVT.

**** 5 mm on SKVT.



Somas reserves the right to make improvements without prior notice.

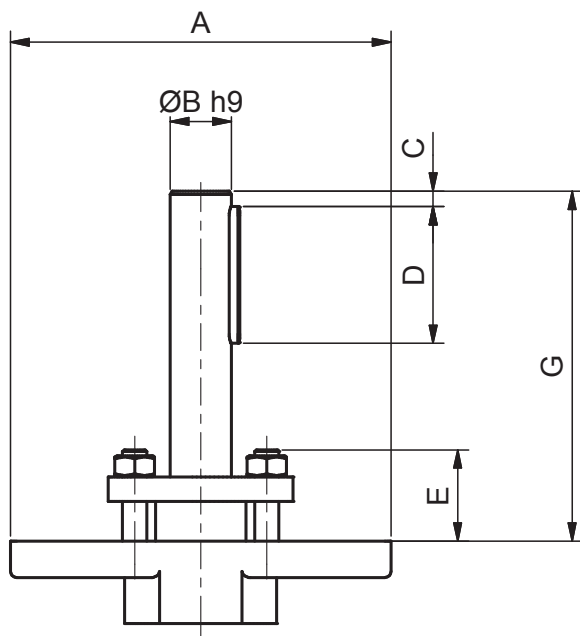


Appearance 2

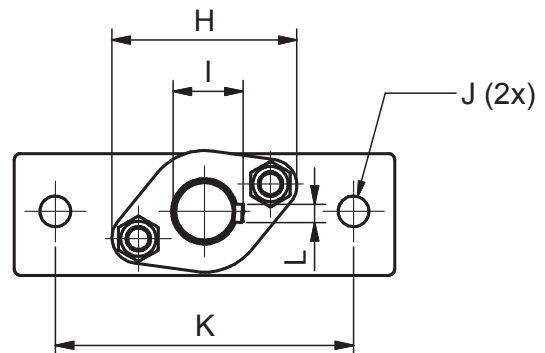
No.	A	B	C	D	E	G	H	I	J*	K	L	M	N
B19	125	20	5	45	30	115/223**	61	22,5	M12	98	6	40	-
B20	125	25	5	45	30	115/226**	63	28	M12	98	8	45	-
B21	150	30	5	60	40	135/263**	72	33	M12	123	8	50	24
B22	170	35	5	70	40	135	75	38	M12	123	10	55	24
B23	150	35	5	50	40	135/252**	75	38	M12	123	10	55	24
B24	150	40	5	50	50	155/269**	94	43	M12	123	12	74	40
B25	170	40	3	90	50	155	94	43	M12	123	12	74	40
B26	170	50	5	80	50	200	107	53.5	M16	136	14	87	55
B27	210	60	5	90	60	210	117	64	M20	150	18	96	70
B28	220	70	6	110	60	225	112	74.5	M16	Ø 160	20	162	-

* Minimum thread fastening 1xØ, Maximum 1.5xØ.

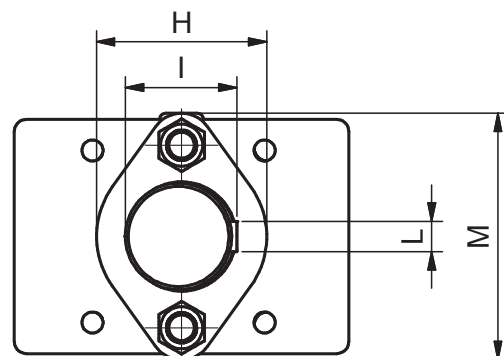
** Dimension for valves with extended shaft, Code "E.." instead of "B.."



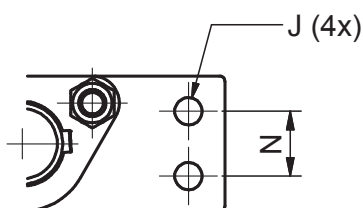
(B19 - B20)



(B28)



(B21 - B27)



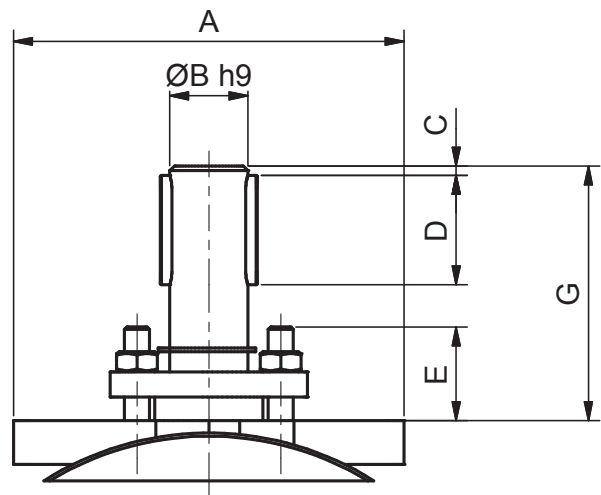
Somas reserves the right to make improvements without prior notice.



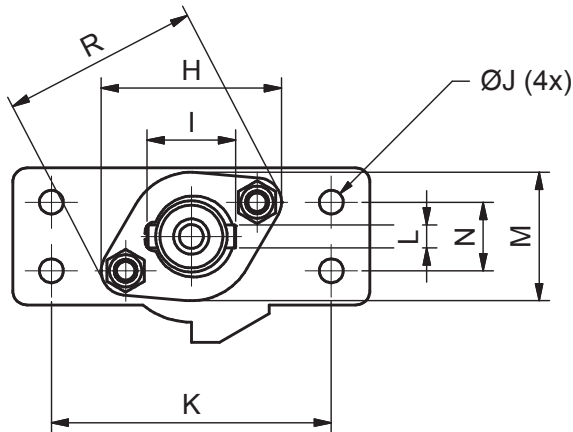
Appearance 3

No.	A	B	C	D	E	G	H	I	J*	K	L	M	N	O	R
B29	125	25	3	35	26	82	63	31	M10	98	8	45	24	-	64
B30	150	30	5	50	30	108	72	36	M12	123	8	50	24	-	80
B31	150	35	5	60	30	130	75	41	M12	123	10	55	32	-	85
B32	172	40	5	70	50	160	94	46	M16	136	12	74	44	-	108
B33	205	50	4	80	50	180	107	57	M20	165	14	87	45	-	124
B34	300	70	5	100	62	212	140	79	M24	250	20	112	60	-	162
B35	354	80	5	120	76	240	162	90	M24	304	22	120	76	230	183
B36	415	90	5	140	68	258	140	100	M30	355	25	140	80	240	-
B37	415	100	5	170	71	287	150	112	M30	355	28	150	80	240	-

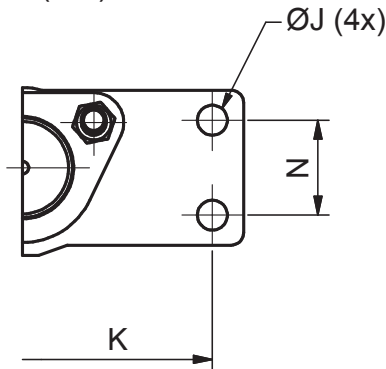
* Minimum thread fastening 1xØ, Maximum 1.5xØ.



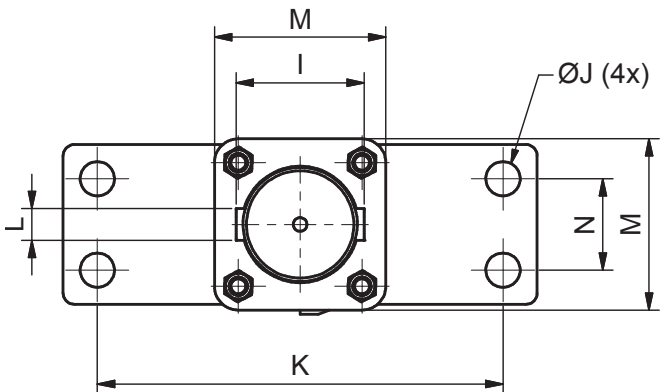
(B29 - B34)



(B35)



(B36 - B37)



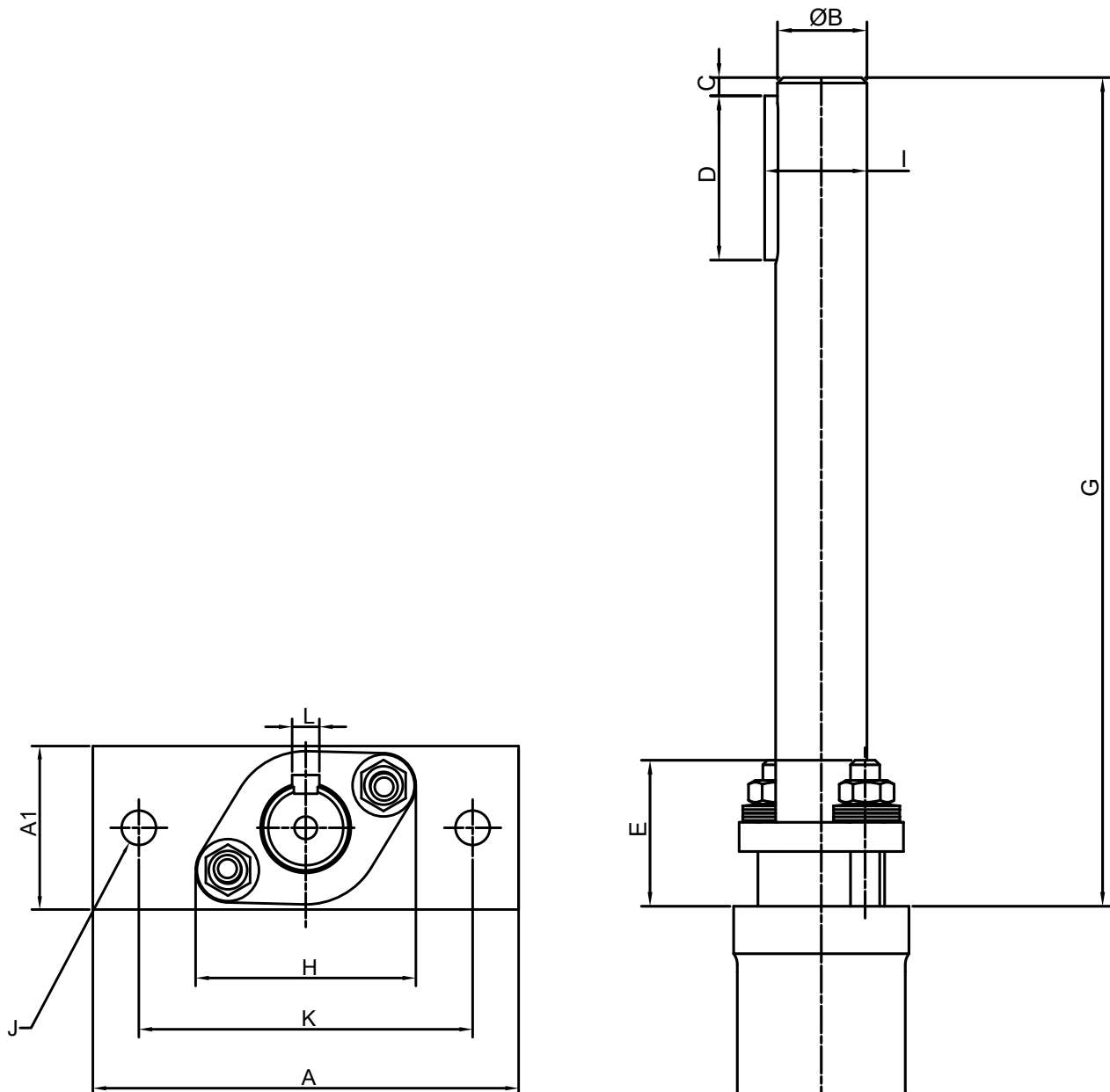
Somas reserves the right to make improvements without prior notice.



Appearance 4

No.	A	A1	B	C	D	E	G	H	I	J*	K (HCD)	L	N
E48	125	40	20	5	45	53	228	62	22,5	M12	98	6	-
E49	125	44	20	5	45	43	228	62	22,5	M12	98	6	-
E50	125	48	20	5	45	40	228	62	22,5	M12	98	6	-
E51	125	50	25	5	45	40	227	65	28	M12	98	8	-
E52	125	48	25	6	45	40	227	65	28	M12	98	8	-
E53	150	50	30	5	60	45	262	76	33	M12	123	8	24
E54	150	78	30	5	60	46	262	76	33	M12	123	8	24
E55	150	78	35	5	50	41	254	77	38	M12	123	10	40

* Minimum thread fastening 1xØ, Maximum 1.5xØ.



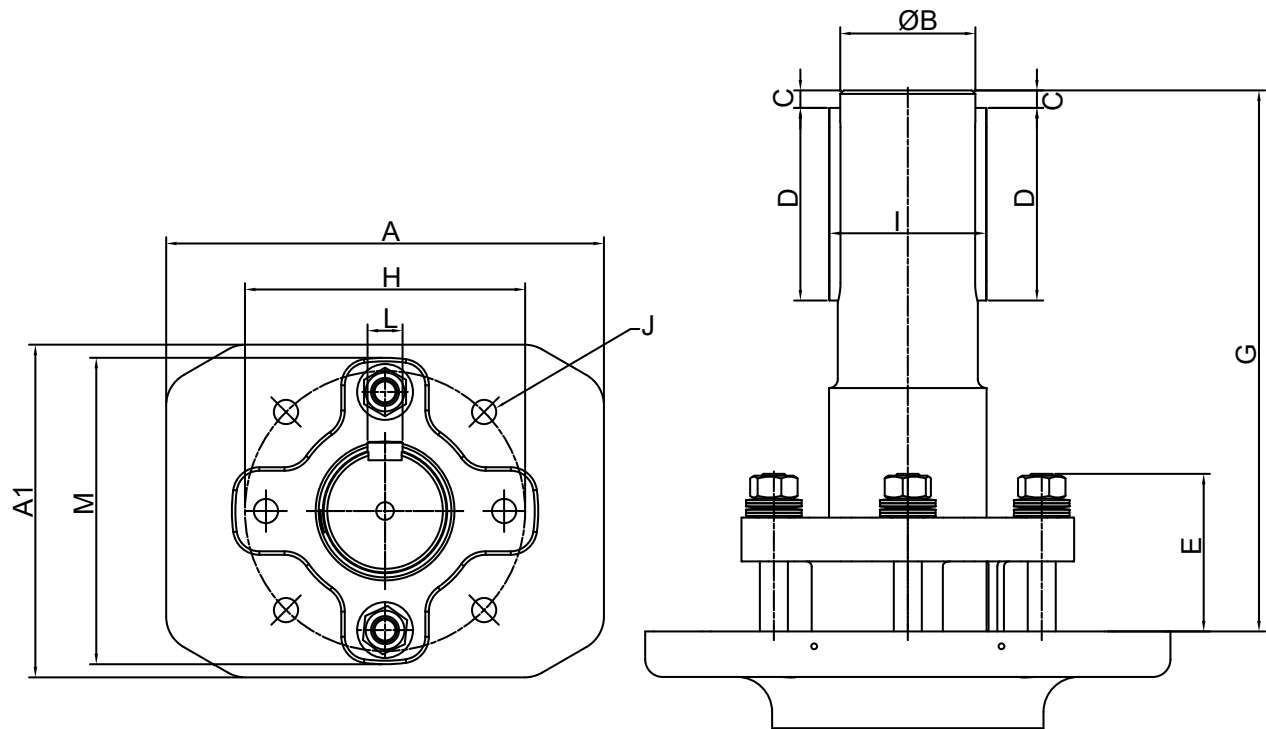
Somas reserves the right to make improvements without prior notice.



Appearance 5

No.	A	A1	B	C	D	E	G	H	I	J*	K (HCD)	L	M
E56	170	120	40	5	70	64	275	71	43	M12	120	12	110
E57	180	180	50	10	80	75	288	90	54	M16	160	14	135
E58	180	180	50	10	80	80	290	90	54	M16	160	14	135
E59	220	180	60	10	90	80	342	99	64	M16	160	18	145
E60	250	190	70	10	110	84	364	175	5	M16	160	20	175
E61	220	200	80	10	120	84	369	175	85	M20	160	22	175
E62	300	250	80	10(x2)	110(x2)	90	315	190	90	M20	205	22	240
E63	250	-	90	10(x2)	140(x2)	92	338	190	100	M20	205	25	240

* Minimum thread fastening 1xØ, Maximum 1.5xØ.





Appearance 6, VSS-HT, MTV-HT

No.	A	A1	B	C	D	E	G**	H	I	J*	K (HCD)	L	M	N
B64	170	120	50	10	80	64	200	120	54	M12	120	14	96	
E10	150		40	5	70	50	270	70	43	M12	120	12	108	
E11	170	120	50	10	80	64	284	110	54	M12	120	14	96	
E12	220	180	60	10	90	73	340	96	64	M16	160	18	118	
B66	220	180	60	10	90	73	210	118	64	M16	160	18	118	
E19	125	40-44-48	20	5	45	35	223-228	62	23	M12	98	6	118	
E20	125	50	25	5	45	30-35	226	65	28	M12	98	8	45	
E21	150	50	30	5	60	40	263	72	33	M12	123	8	50	24
E23	150	60	35	5	50	40	252	75	38	M12	123	10	55	24
E24	150	70	40	5	70	53,5	269	94	43	M12	123	12	74	40
E26	170	85	50	10	80	64	284	107	54	M16	136	14	87	55
E38	120		20	5	45	30	230	44	23	M12	90	6	64	
E39	120		25	5	45	30	225	45	28	M12	90	8	69	
E40	150		30	5	60	40	241	50	33	M12	120	8	79	
E41	150		35	5	50	40	255	55	38	M12	120	10	85	
E44 DN600	200		70	10	110	80	370	130	75	M16	160	20	177	
E44 DN700	200		70	10	110	80	360	130	75	M16	160	20	177	
E44 DN800	250	190	80	10	120	101	370	150	85	M16	160	22	180	
E44 DN900	200		80	10	120	101	370	150	85	M16	160	22	180	
E45 DN1000	250		80	10	110/120	92	320	200	90	M20	205	22	240	
E45 DN1200	250		100	10	125	92	320	20	106	M20	205	28	240	

* Minimum thread fastening 1xØ, Maximum 1.5xØ.

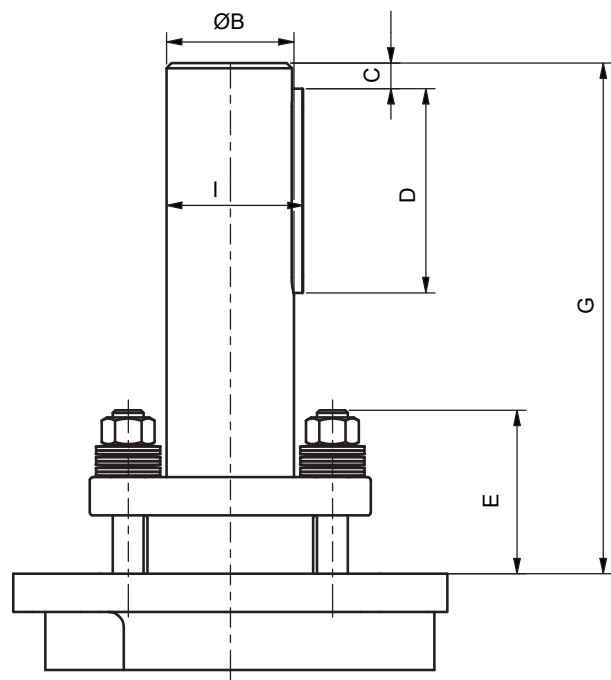
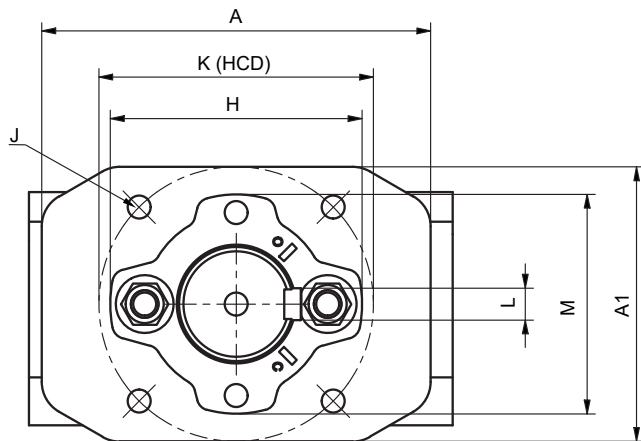
** Dimension for valves with extended shaft, Code "E.." instead of "B.."



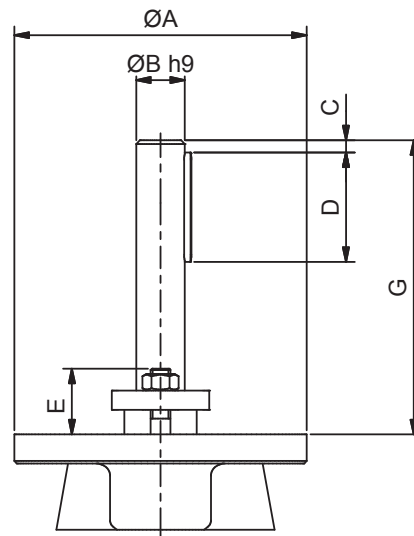
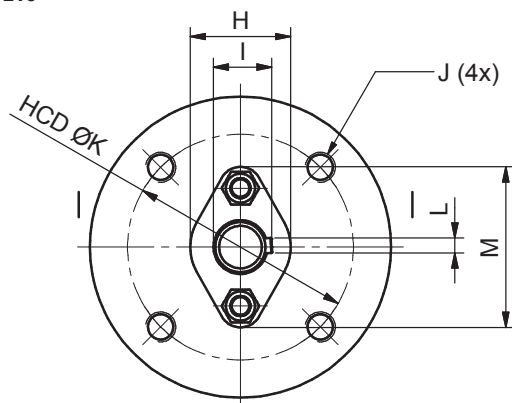
Somas reserves the right to make improvements without prior notice.

Appearance 6, VSS-HT, MTV-HT

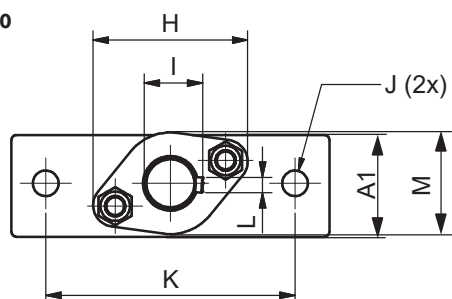
E11-E12
E44-E45
B64, B66



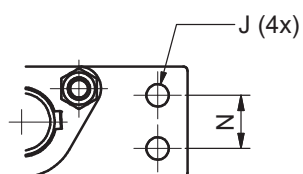
E38-E41
E10



E19-E20



E21-E26





Appearance 7, SPV

No.	A	A1	B	C	D	E	G**	H	I	J*	K (HCD)	L	M	N
E48	125	40	20	5	45	55	228	62	23	M12	98	6	40	-
E49	125	44	20	5	45	43	228	62	23	M12	98	6	40	-
E50	125	48	20	5	45	40	228	62	23	M12	98	6	40	-
E51	125	50	25	5	45	40	227	66	28	M12	98	8	45	-
E52	125	48	25	6	45	40	227	65	28	M12	98	8	45	-
E53	150	50	30	5	60	45	262	76	33	M12	123	8	55	24
E54	150	60	30	5	60	45	261	76	33	M12	123	8	55	24
E55	150	78	35	5	50	41	251	77	38	M12	123	10	60,5	40
E56	170	120	40	5	70	64	275	71	43	M12	120	12	110	-
E57	180	180	50	10	80	80	284	92	54	M16	160	14	136	-
E58	180	180	50	10	80	80	290	92	54	M16	160	14	136	-
E60	250	190	70	10	110	84	364	175	75	M16	160	20	175	-
E61	220	200	80	10	120	84	369	175	85	M20	182	22	175	-
E62	300	250	80	10(x2)	110(x2)	90	309	190/240	90	M20	205	22	240	-
E63	250	-	90	10(x2)	140(x2)	92	338	240	100	M20	205	25	240	-

* Minimum thread fastening 1xØ, Maximum 1.5xØ.

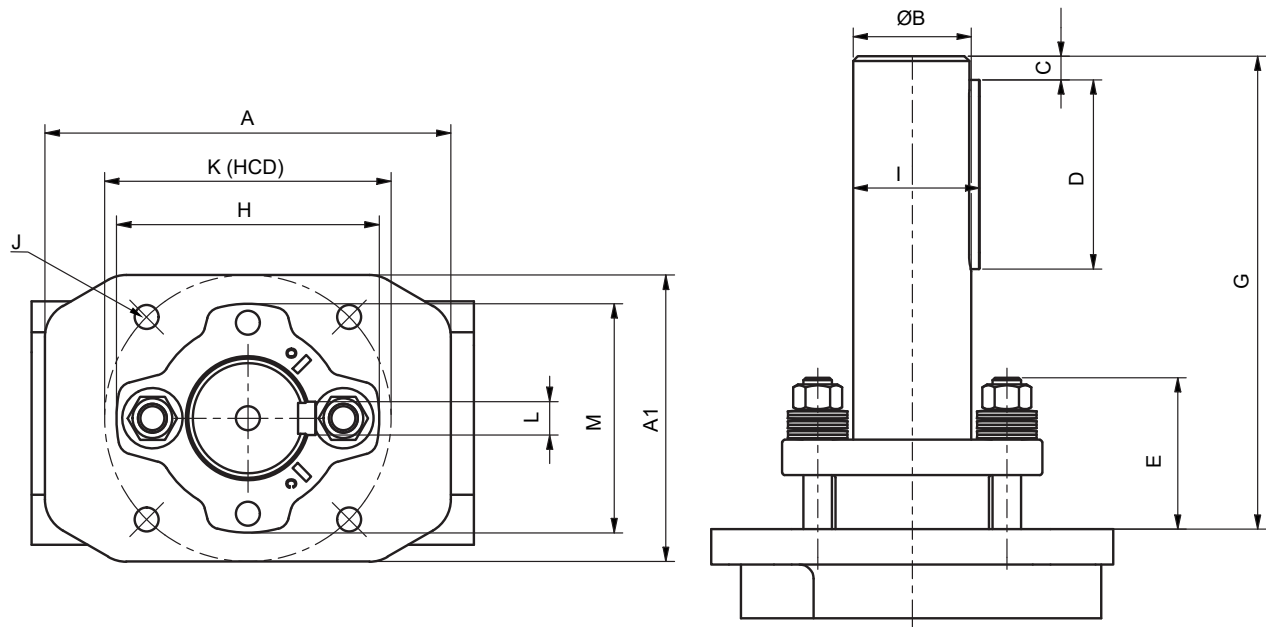
** Dimension for valves with extended shaft, Code "E.." instead of "B.."



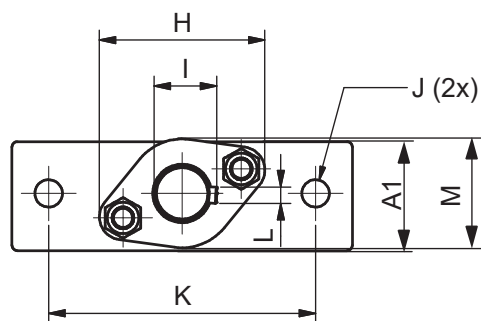


Appearance 7, SPV

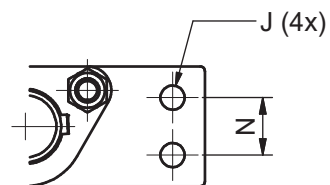
E56-E63



E48-E52



E53-E55





Somas actuators and gear units attachment standards

Somas Pneumatic Actuator	Mounting pattern according to ISO 5211
A11 - A13	F07
A21 - A24	F10
A31 - A34	F14
A41 - A44	F16
A51 - A52	F30



Gear Unit	Mounting pattern according to ISO 5211
AB 150	F04-F05-F07
AB 215	F05-F07-F10
AB 550	F07-F10-F12- F14
AB 880	F10-F12-F14-F16
AB 1250	F10-F12-F14-F16
AB 1950 PR4	F12-F14-F16-F25
AB 2000	F12-F14-F16
AB 3000 PR4	F16-F25
AB 3000 PR6	F16-F25
AB 6800 PR6	F16-F25-F30
A 200 PR10	F25-F30-F35
A 250 PR10	F25-F30-F35-F40



Somas reserves the right to make improvements without prior notice.



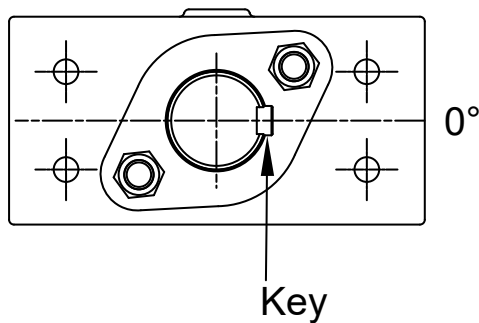
Key slot Somas Ball Segment Valves

To ensure that a Somas valve in combination with a non-Somas Actuator (without over travel) achieves the closing position, the Key slot is turned out of the center line in some of Somas valves.

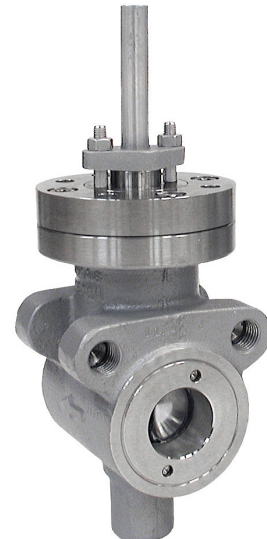
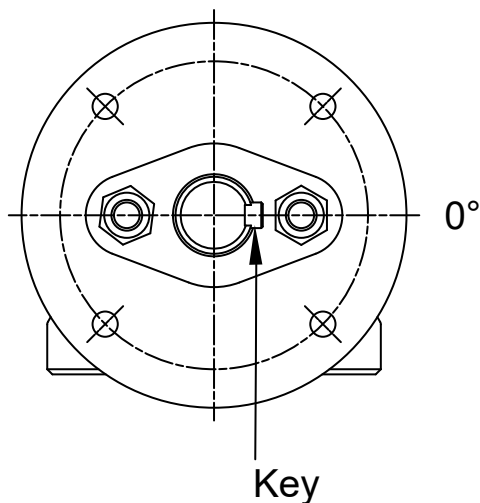
The angles of the Key slot in Somas ball segment valves are shown below:

Ball segment valves

KVT/HVV 0°



KVT/HVV 0°





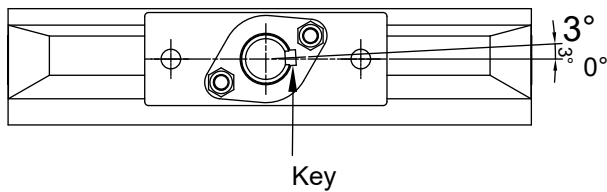
Key slot Somas Butterfly valves

To ensure that a Somas valve in combination with a non-Somas Actuator (without over travel) achieves the closing position, the Key slot is turned out of the center line in some of Somas valves.

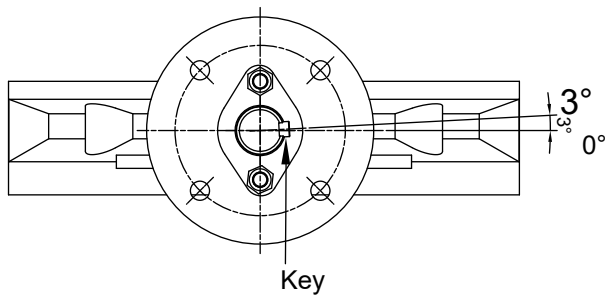
The angles of the Key slot in Somas butterfly valves are shown below:

Butterfly valves

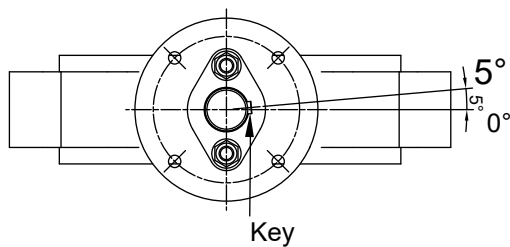
MTV/FSV 3°



VSS 3° serie -05 and -06 (PN 25)

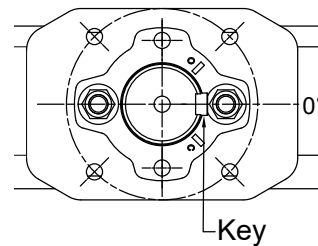


VSS 5° serie -02 (PN50) and -04 (PN25)

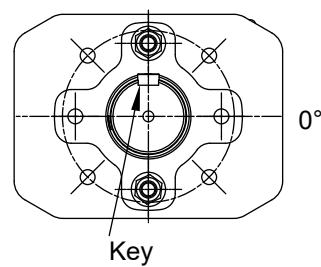


Butterfly valves HT (High Temperature)

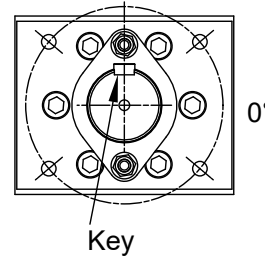
MTV HT / VSS HT 0°



SPV 270°



SIV 270°



Somas reserves the right to make improvements without prior notice.

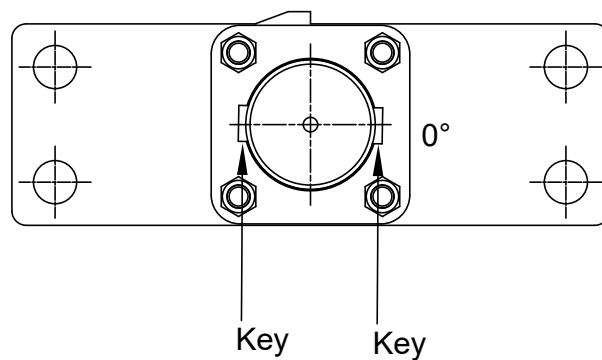
Key slot Somas Ball valves

To ensure that a Somas valve in combination with a non-Somas Actuator (without over travel) achieves the closing position, the Key slot is turned out of the center line in some of Somas valves.

The angles of the Key slot in Somas ball valves are shown below:

Ball valves

SKV 0° + 180°





Somas.se



LinkedIn

Head office

Somas Instrument AB

Norrlandsvägen 26

SE-661 40 SÄFFLE

Sweden

Phone: +46 (0)533 69 17 00

E-mail: sales@somas.se

www.somas.se

