

Datasheet

Ball valve

SKV, SKVT

Si-706 EN

Edition: 2024-05

- High capacity – full bore design
- Excellent tightness also at low differential pressure due to spring-loaded seats
- Two alternative seat materials
- Hard Chrome plated or HiCo (High Cobalt Alloy) coated ball
- Easy maintenance



Flanged design

| | Nominal pressure | | Nominal size | NPS |
|-----------|------------------|-----------|--------------|---------|
| Type SKV | PN 40 | Class 300 | DN 25 - 50 | 1 - 2 |
| Type SKV | PN 25 | Class 150 | DN 80 - 400 | 3 - 16 |
| Type SKVT | PN 25 | Class 150 | DN 450 - 500 | 18 - 20 |



Copyright

The copyright on this installation and maintenance datasheet is held by Somas Instrument AB. The instructions and drawings contained may not be fully or partially copied, distributed or used in any unauthorized way for competitive purposes or passed on to others.

Sales and distribution

Somas Instrument AB
P.O. Box 107
SE-661 23 SÄFFLE, Sweden
Visiting address: Norrlandsv. 26-28

Phone: +46 533 69 17 00
Mail to: sales@somas.se
Internet: www.somas.se



Product Information

Somas ball valves type SKV and SKVT are designed to meet the requirements of the process industry. The valves can be used for shut-off as well as control applications within a wide temperature range. SKV valves in sizes DN25 - 50 has one-piece valve body, while the DN80 - 500 has a 2-piece valve body. The 2-piece valve body is split beside the centreline of the valve shaft. The valve seats can be replaced without removing the actuator.

The valve can be delivered with valve seats both in PTFE53 (PTFE stabilized with stainless steel powder) and in HiCo (High Cobalt Alloy). HiCo (High Cobalt Alloy) seats are as option available in locked design, scraper design or a combination of both.

In the dimensions DN25 – 400 the valve has a floating ball design with support from the valve seats. The valve has the designation SKV.

In the dimensions DN450 - 500 the ball is supported in the top and bottom by bearings (trunnion supported) and the valve has the designation SKVT.

The Somas valves are delivered ready for installation and operation.

The valve is delivered factory tested as complete units with the actuators, positioners and accessories.



Tightness class

The tightness of the valve is related to the chosen material in the seat ring.

| Standard leakage class | Optional leakage class |
|------------------------|------------------------|
| EN 60534-4 | EN 60534-4 |
| PTFE 53 - Class V | PTFE 53 - Class VI |
| HiCo - Class IV-S1 | HiCo - Class V |
| | EN 12266-1 |
| | PTFE 53 - Rate D |
| | PTFE 53 - Rate C |
| | HiCo - Rate F |
| | HiCo - Rate E |

Valve sizing

Use Somas valve sizing program SomSize to find the correct valve size. All sizing factors are included in the program.

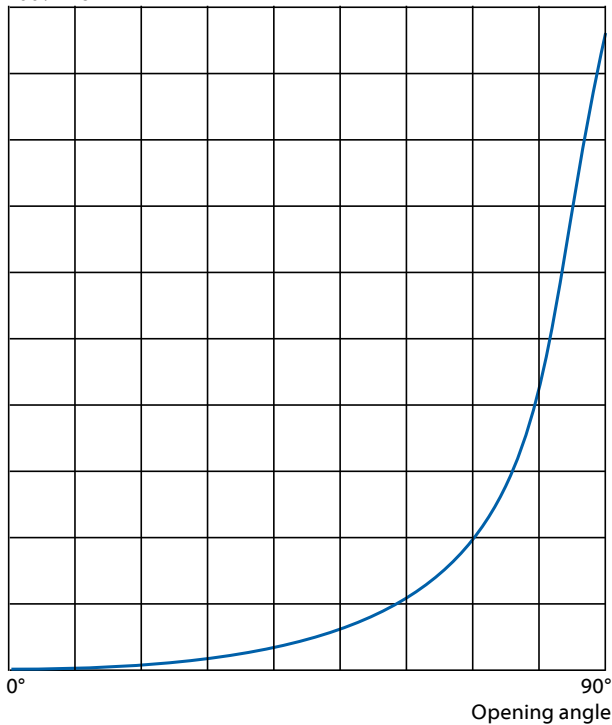
Factor FLP

| | Opening angle | | | | | | | | |
|-------------|---------------|-----|-----|------|------|------|------|------|------|
| | 10° | 20° | 30° | 40° | 50° | 60° | 70° | 80° | 90° |
| FLP1 | 0.9 | 0.9 | 0.9 | 0.89 | 0.84 | 0.77 | 0.66 | 0.52 | 0.33 |
| FLP2 | 0,9 | 0,9 | 0,9 | 0,89 | 0,84 | 0,76 | 0,64 | 0,49 | 0,31 |
| FLP3 | 0.9 | 0.9 | 0.9 | 0.89 | 0.83 | 0.75 | 0.63 | 0.48 | 0.29 |

FLP1 = One dimension bigger pipe size
 FLP2 = Two dimensions bigger pipe size
 FLP3 = Three dimensions bigger pipe size

Flow characteristics

100% Flow



Pressure and temperature rating

Max working pressure in bar (g) for **Stainless Steel 1.4408 or CF8M**

| Type | DN | PN | Seat code | Max. working pressure ¹ (bar at° C) | | | | | |
|------|---------|----|---------------|--|--------|--------|--------|--------|---------|
| | | | | 0° C | 100° C | 150° C | 200° C | 250° C | <280° C |
| SKV | 25-50 | 40 | T (HiCo Gr 6) | 40 | 40 | 36.3 | 33,7 | 31,8 | Note 1 |
| | | | B (PTFE 53) | 40 | 40 | 36.3 | 20,15 | - | - |
| SKVT | 450-500 | 25 | T (HiCo Gr 6) | 25 | 25 | 22.7 | 21 | 19,8 | Note 1: |
| | | | B (PTFE 53) | 25 | 25 | 22.7 | 12,6 | - | - |

10 bar = 1 MPa

Note 1: Check with Somas

¹ **NB!** Do not exceed working pressure for the valve.

Minimum working temperature -60°. If lower temperatures are needed contact Somas.



Capacity factor Kv and Resistance factor ζ for ball valve type SKV

| | DN | Opening angle | | | | | | | | | | ζ 90° |
|------|-----|---------------|------|------|------|------|------|------|-------|-------|-------|-------|
| | | 0° | 10° | 20° | 30° | 40° | 50° | 60° | 70° | 80° | 90° | |
| SKV | 25 | 0 | 0,35 | 1,15 | 2,55 | 4,6 | 6 | 11 | 19 | 39 | 80 | 0,097 |
| | 40 | 0 | 1,05 | 2,58 | 6 | 11 | 16 | 25 | 45 | 93 | 190 | 0,112 |
| | 50 | 0 | 2 | 5 | 12 | 21 | 30 | 49 | 87 | 182 | 370 | 0,072 |
| | 80 | 0 | 4 | 12 | 28 | 49 | 72 | 117 | 205 | 430 | 875 | 0,085 |
| | 100 | 0 | 6 | 26 | 53 | 89 | 135 | 235 | 370 | 705 | 1650 | 0,058 |
| | 125 | 0 | 13 | 41 | 82 | 136 | 216 | 408 | 557 | 1095 | 2585 | 0,058 |
| | 150 | 0 | 16 | 61 | 119 | 193 | 330 | 526 | 885 | 1645 | 3740 | 0,120 |
| | 200 | 0 | 35 | 105 | 205 | 340 | 582 | 935 | 1585 | 2915 | 6800 | 0,055 |
| | 250 | 0 | 61 | 171 | 326 | 552 | 906 | 1540 | 2510 | 4765 | 11220 | 0,049 |
| | 300 | 0 | 92 | 241 | 468 | 793 | 1282 | 2234 | 3625 | 6980 | 16490 | 0,047 |
| SKVT | 350 | 0 | 127 | 328 | 639 | 1079 | 1761 | 3080 | 4575 | 8910 | 20300 | 0,058 |
| | 400 | 0 | 145 | 428 | 752 | 1417 | 2331 | 4060 | 6545 | 12545 | 26850 | 0,056 |
| | 450 | 0 | 190 | 545 | 970 | 1850 | 3050 | 5075 | 8470 | 16350 | 35000 | 0,053 |
| | 500 | 0 | 215 | 688 | 1204 | 2279 | 3741 | 6020 | 10320 | 20081 | 43000 | 0,054 |

Relation between Kv and Cv: Cv = 1,156 x Kv

Necessary closing torque

| | Valve DN | Shaft dia. (mm) | Ball valve with PTFE 53-seats | | | | | Ball valve with HiCo-seats | | | | | | |
|-----|----------|-----------------|---|----|----|----|-----|---|----|----|----|----|-----|-----|
| | | | Necessary closing torque (Nm) at Δp (bar) | | | | | Necessary closing torque (Nm) at Δp (bar) | | | | | | |
| | | | 10 | 20 | 30 | 40 | 50 | 10 | 20 | 30 | 40 | 50 | 60 | |
| SKV | 25 | 15 | 20 | 24 | 32 | 40 | 48 | 25 | 15 | 20 | 30 | 40 | 50 | 60 |
| | 40 | 15 | 25 | 34 | 44 | 55 | 65 | 40 | 15 | 28 | 42 | 55 | 65 | 74 |
| | 50 | 20 | 35 | 52 | 72 | 92 | 115 | 50 | 20 | 43 | 65 | 90 | 115 | 145 |

| | Valve DN | Shaft dia. (mm) | Ball valve with PTFE 53-seats | | | | | Ball valve with HiCo-seats | | | | | | |
|------|----------|-----------------|---|------|------|-------|-------|---|-----|------|-------|-------|-------|-------|
| | | | Necessary closing torque (Nm) at Δp (bar) | | | | | Necessary closing torque (Nm) at Δp (bar) | | | | | | |
| | | | 5 | 10 | 15 | 20 | 25 | 5 | 10 | 15 | 20 | 25 | | |
| SKV | 80 | 25 | 90 | 120 | 150 | 180 | 220 | 80 | 25 | 160 | 210 | 260 | 310 | 360 |
| | 100 | 30 | 150 | 200 | 260 | 310 | 380 | 100 | 30 | 260 | 370 | 480 | 590 | 700 |
| | 125 | 35 | 220 | 320 | 430 | 550 | 680 | 125 | 35 | 400 | 600 | 800 | 1000 | 1200 |
| | 150 | 40 | 380 | 540 | 740 | 960 | 1200 | 150 | 40 | 650 | 1050 | 1400 | 1800 | 2200 |
| | 200 | 50 | 700 | 1040 | 1400 | 1800 | 2300 | 200 | 50 | 1200 | 2000 | 2900 | 3700 | 4500 |
| | 250 | 70 | 1300 | 1900 | 2600 | 3400 | 4300 | 250 | 70 | 2500 | 4000 | 5500 | 7000 | 8500 |
| | 300 | 80 | 1900 | 3000 | 4200 | 5500 | 7000 | 300 | 80 | 3800 | 6000 | 8400 | 10600 | 13000 |
| | 350 | 90 | 2600 | 4200 | 5800 | 7600 | 9600 | 350 | 90 | 5500 | 9000 | 12000 | 15500 | 19000 |
| SKVT | 400 | 100 | 3700 | 6000 | 8400 | 11000 | 14000 | 400 | 100 | 8000 | 13000 | 18000 | 23000 | 28000 |
| | 450 | 80 | 2600 | 4200 | 6300 | 7700 | 9700 | 450 | 80 | 3900 | 6200 | 9500 | 11700 | 14500 |
| | 500 | 80 | 3860 | 6085 | 9270 | 11395 | 14000 | 500 | 80 | 5800 | 9150 | 13900 | 17100 | 21000 |



Selection table, gear unit (hand operated)

| Valve DN | Shaft dia. (mm) | Gear unit for ball valve with PTFE 53-seats at Δp (bar) | | | | | | | |
|----------|-----------------|---|-------------|--------------|-------------|-------------|--------|--------|--------|
| | | 5 | 10 | 15 | 20 | 25 | 30 | 40 | 50 |
| 25 | 15 | - | AB150N | - | AB150N | - | AB150N | AB150N | AB150N |
| 40 | 15 | - | AB150N | - | AB150N | - | AB150N | AB150N | AB150N |
| 50 | 20 | - | AB215N | - | AB215N | - | AB215N | AB215N | AB215N |
| 80 | 25 | AB215N | AB215N | AB215N | AB215N | AB215N | - | - | - |
| 100 | 30 | AB215N | AB215N | AB215N | AB215N | AB215N | - | - | - |
| 125 | 35 | AB550N | AB550N | AB550N | AB550N | AB550N | - | - | - |
| 150 | 40 | AB550N | AB550N | AB550N | AB550N | AB880N | - | - | - |
| 200 | 50 | AB880N | AB880N | AB880N | AB880N | AB2000N | - | - | - |
| 250 | 70 | AB2000N | AB2000N | AB2000N | AB2000N | AB2000N | - | - | - |
| 300 | 80 | AB2000N | AB2000N | AB2000N | AB1950N/PR4 | AB1950N/PR4 | - | - | - |
| 350 | 90 | AB3000N | AB2000N/PR4 | AB1915N/PR4 | AB3000N/PR4 | AB3000N/PR6 | - | - | - |
| 400 | 100 | AB3000N/PR4 | AB3000N/PR4 | AB3000N /PR4 | AB3000N/PR6 | AB6800N/PR6 | - | - | - |
| 450 | 80 | AB2000N | AB2000N | AB1950N/PR4 | AB3000N/PR4 | AB3000N/PR6 | - | - | - |
| 500 | 80 | AB2000N | AB1950N/PR4 | AB3000N/PR6 | AB6800N/PR4 | AB6800N/PR6 | - | - | - |

| Valve DN | Shaft dia. (mm) | Gear unit for ball valve with HiCo-seats at Δp (bar) | | | | | | | |
|----------|-----------------|--|-------------|-------------|--------------|-------------|--------|--------|--------|
| | | 5 | 10 | 15 | 20 | 25 | 30 | 40 | 50 |
| 25 | 15 | - | AB150N | - | AB150N | - | AB150N | AB150N | AB150N |
| 40 | 15 | - | AB150N | - | AB150N | - | AB150N | AB150N | AB150N |
| 50 | 20 | - | AB215N | - | AB215N | - | AB215N | AB215N | AB215N |
| 80 | 25 | AB215N | AB215N | AB215N | AB215N | AB215N | - | - | - |
| 100 | 30 | AB550N | AB215N | AB215N | AB550N | AB550N | - | - | - |
| 125 | 35 | AB550N | AB550N | AB550N | AB550N | AB880N | - | - | - |
| 150 | 40 | AB880N | AB880N | AB880N | AB880N | AB2000N | - | - | - |
| 200 | 50 | AB880N | AB2000N | AB2000N | AB2000N | AB2000N | - | - | - |
| 250 | 70 | AB2000N | AB2000N | AB1950N/PR4 | AB1950N/PR4 | AB3000N/PR4 | - | - | - |
| 300 | 80 | AB2000 N | AB1950N/PR4 | AB3000N/PR4 | AB3000 N/PR6 | AB6800N/PR6 | - | - | - |
| 350 | 90 | AB3000N/PR4 | AB3000N/PR4 | AB6800N/PR4 | AB6800N/PR6 | A200N/PR10 | - | - | - |
| 400 | 100 | AB3000N/PR4 | AB6800N/PR6 | A200N/PR10 | A200N/PR10 | A250N/PR10 | - | - | - |
| 450 | 80 | AB2000N | AB1950N/PR4 | AB3000N/PR6 | AB6800N/PR4 | AB6800N/PR6 | - | - | - |
| 500 | 80 | AB1950N/PR4 | AB3000N/PR6 | AB6800N/PR6 | A200N/PR10 | A200N/PR10 | - | - | - |



Selection table, pneumatic actuators type A-DA (air supply min. 5,5 bar)

| | Valve DN | Shaft dia. (mm) | Actuator for ball valve with PTFE 53-seats at Δp (bar) | | | | | Valve DN | Shaft dia. (mm) | Actuator for ball valve with HiCo-seats at Δp (bar) | | | | |
|-----|----------|-----------------|--|--------|--------|--------|--------|----------|-----------------|---|--------|--------|--------|---------------------|
| | | | 10 | 20 | 30 | 40 | 50 | | | 10 | 20 | 30 | 40 | 50 |
| SKV | 25 | 15 | A11-DA | A11-DA | A11-DA | A11-DA | A11-DA | 25 | 15 | A11-DA | A11-DA | A11-DA | A11-DA | A13-DA |
| | 40 | 15 | A11-DA | A11-DA | A11-DA | A11-DA | A13-DA | 40 | 15 | A11-DA | A11-DA | A11-DA | A13-DA | A13-DA |
| | 50 | 20 | A11-DA | A11-DA | A13-DA | A13-DA | A21-DA | 50 | 20 | A13-DA | A13-DA | A13-DA | A21-DA | A21-DA |
| SKV | 80 | 25 | A21-DA | A21-DA | A22-DA | A22-DA | A22-DA | 80 | 25 | A22-DA | A22-DA | A22-DA | A22-DA | A22-DA |
| | 100 | 30 | A22-DA | A22-DA | A22-DA | A23-DA | A31-DA | 100 | 30 | A22-DA | A23-DA | A31-DA | A31-DA | A32-DA |
| | 125 | 35 | A31-DA | A31-DA | A31-DA | A31-DA | A32-DA | 125 | 35 | A31-DA | A31-DA | A32-DA | A32-DA | A32-DA |
| | 150 | 40 | A31-DA | A31-DA | A32-DA | A32-DA | A32-DA | 150 | 40 | A32-DA | A32-DA | A41-DA | A41-DA | A41-DA |
| | 200 | 50 | A32-DA | A32-DA | A41-DA | A41-DA | A42-DA | 200 | 50 | A32-DA | A41-DA | A42-DA | A42-DA | A42-DA |
| | 250 | 70 | A41-DA | A41-DA | A42-DA | A42-DA | A42-DA | 250 | 70 | A42-DA | A42-DA | A51-DA | A51-DA | A52-DA |
| | 300 | 80 | A41-DA | A42-DA | A42-DA | A51-DA | A51-DA | 300 | 80 | A42-DA | A51-DA | A52-DA | A52-DA | A52-DA |
| | 350 | 90 | A51-DA | A51-DA | A51-DA | A51-DA | A52-DA | 350 | 90 | A51-DA | A52-DA | A52-DA | A52-DA | A52-DA ¹ |
| | 400 | 100 | A51-DA | A51-DA | A51-DA | A52-DA | A52-DA | 400 | 100 | A51-DA | A52-DA | A52-DA | | |
| | SKVT | 450 | 80 | A41-DA | A42-DA | A51-DA | A51-DA | A52-DA | 450 | 80 | A42-DA | A51-DA | A52-DA | A52-DA |
| 500 | | 80 | A42-DA | A42-DA | A51-DA | A52-DA | A52-DA | 500 | 80 | A42-DA | A51-DA | A52-DA | A52-DA | X |

¹ Air supply = 6 bar

Selection table, pneumatic actuators type A-DA (air supply min. 4 bar)

| | Valve DN | Shaft dia. (mm) | Actuator for ball valve with PTFE 53-seats at Δp (bar) | | | | | Valve DN | Shaft dia. (mm) | Actuator for ball valve with HiCo-seats at Δp (bar) | | | | |
|-----|----------|-----------------|--|--------|--------|--------|--------|----------|-----------------|---|--------|--------|----------------------|----------------------|
| | | | 10 | 20 | 30 | 40 | 50 | | | 10 | 20 | 30 | 40 | 50 |
| SKV | 25 | 15 | A11-DA | A11-DA | A11-DA | A11-DA | A11-DA | 25 | 15 | A11-DA | A11-DA | A11-DA | A13-DA | A13-DA |
| | 40 | 15 | A11-DA | A11-DA | A11-DA | A13-DA | A13-DA | 40 | 15 | A11-DA | A11-DA | A13-DA | A13-DA | A13-DA |
| | 50 | 20 | A21-DA | A21-DA | A21-DA | A21-DA | A22-DA | 50 | 20 | A21-DA | A21-DA | A21-DA | A22-DA | A22-DA |
| SKV | 80 | 25 | A21-DA | A22-DA | A22-DA | A22-DA | A22-DA | 80 | 25 | A22-DA | A22-DA | A23-DA | A24-DA | A24-DA |
| | 100 | 30 | A22-DA | A22-DA | A23-DA | A23-DA | A31-DA | 100 | 30 | A23-DA | A24-DA | A24-DA | A32-DA | A33-DA |
| | 125 | 35 | A31-DA | A31-DA | A31-DA | A32-DA | A32-DA | 125 | 35 | A31DA | A32-DA | A32-DA | A33-DA | A33-DA |
| | 150 | 40 | A31-DA | A32-DA | A32-DA | A33-DA | A41-DA | 150 | 40 | A32-DA | A33-DA | A41-DA | A42-DA | A43-DA |
| | 200 | 50 | A32-DA | A33-DA | A41-DA | A42-DA | A42-DA | 200 | 50 | A41-DA | A42-DA | A42-DA | A43-DA | A52-DA |
| | 250 | 70 | A41-DA | A42-DA | A42-DA | A43-DA | A43-DA | 250 | 70 | A42-DA | A43-DA | A51-DA | A52-DA | |
| | 300 | 80 | A42-DA | A42-DA | A43-DA | A44-DA | A52-DA | 300 | 80 | A43-DA | A44-DA | A52-DA | A52-DA | |
| | 350 | 90 | A51-DA | A51-DA | A51-DA | A52-DA | A52-DA | 350 | 90 | A52-DA | A52-DA | | | |
| | 400 | 100 | A51-DA | A52-DA | A52-DA | A52-DA | | 400 | 100 | A52-DA | | | | |
| | SKVT | 450 | 80 | A42-DA | A43-DA | A44-DA | A44-DA | A52-DA | 450 | 80 | A42-DA | A44-DA | A52-DA | A52-DA |
| 500 | | 80 | A42-DA | A44-DA | A52-DA | A52-DA | A52-DA | 500 | 80 | A44-DA | A52-DA | A52-DA | GP-16OS- -485A/D1 | GP-16OS- -435A/D1 |

Designation for low air supply (4 bar)

The following actuators will have an additional code (L) as the return spring is not the same as in the actuators for 5.5 bar.

SC (Spring closes)

A13-SCL

SO (Spring opens)

A13-SOL, A23-SOL, A24-SOL, A33-SOL, A34-SOL, A43-SOL, A44-SOL

The code for low air supply design has to be specified when ordering.

Note! The GP actuators in this table are specified for on/off valves.



Selection table, pneumatic actuators type A-SC (air supply min. 5,5 bar)

| | Valve DN | Shaft dia. (mm) | Actuator for ball valve with PTFE 53-seats at Δp (bar) | | | | | Valve DN | Shaft dia. (mm) | Actuator for ball valve with HiCo-seats at Δp (bar) | | | | |
|-----|----------|-----------------|--|-----------------|-----------------|-----------------|-----------------|-----------------|-----------------|---|-----------------|-----------------|-----------------|-----------------|
| | | | 10 | 20 | 30 | 40 | 50 | | | 10 | 20 | 30 | 40 | 50 |
| SKV | 25 | 15 | A13-SC | A13-SC | A13-SC | A13-SC | A13-SC | 25 | 15 | A13-SC | A13-SC | A13-SC | A13-SC | A13-SC |
| | 40 | 15 | A13-SC | A13-SC | A13-SC | A13-SC | A23-SC | 40 | 15 | A13-SC | A13-SC | A13-SC | A23-SC | A23-SC |
| | 50 | 20 | A23-SC | A23-SC | A23-SC | A23-SC | A23-SC | 50 | 20 | A23-SC | A23-SC | A23-SC | A23-SC | A23-SC |
| SKV | 80 | 25 | A23-SC | A23-SC | A23-SC | A24-SC | A24-SC | 80 | 25 | A24-SC | A24-SC | A24-SC | A33-SC | * |
| | 100 | 30 | A23-SC | A24-SC | A24-SC | A24-SC | A33-SC | 100 | 30 | A24-SC | A33-SC | A33-SC | A33-SC | A34-SC |
| | 125 | 35 | A33-SC | A33-SC | A33-SC | A33-SC | A34-SC | 125 | 35 | A33-SC | A34-SC | A34-SC | A34-SC | A34-SC |
| | 150 | 40 | A33-SC | A33-SC | A34-SC | A34-SC | A34-SC | 150 | 40 | A34-SC | A34-SC | A43-SC | A43-SC | A43-SC |
| | 200 | 50 | A34-SC | A34-SC | A43-SC | A43-SC | A43-SC | 200 | 50 | A34-SC | A43-SC | A44-SC | A44-SC | A44-SC |
| | 250 | 70 | A43-SC | A43-SC | A44-SC | A44-SC | A44-SC | 250 | 70 | A44-SC | A44-SC | | | |
| | 300 | 80 | A43-SC | A44-SC | | | | 300 | 80 | A44-SC | | | | |
| | 350 | 90 | | | | | | 350 | 90 | | | | | |
| | 400 | 100 | | | | | | 400 | 100 | | | | | |
| | SKVT | 450 | 80 | A44-SC | GP-130S-385A/C1 | GP-130S-535A/C6 | GP-160S-485A/C2 | GP-160S-485A/C3 | 450 | 80 | GP-130S-385A/C3 | GP-130S-535A/C6 | GP-160S-485A/C3 | GP-160S-585A/C4 |
| 500 | | 80 | A44-SC | GP-130S-385A/C1 | GP-130S-535A/C6 | GP-160S-485A/C2 | GP-160S-485A/C3 | 500 | 80 | GP-130S-385A/C3 | GP-130S-535A/C6 | GP-160S-485A/C3 | GP-160S-585A/C4 | GP-161S-635A/C5 |

SC = Spring to close

Note! The GP actuators in this table are specified for on/off valves.

* See table for low air supply actuators (4 bar).

Selection table, pneumatic actuators type A-SC (air supply min. 4 bar)

| | Valve DN | Shaft dia. (mm) | Actuator for ball valve with PTFE 53-seats at Δp (bar) | | | | | Valve DN | Shaft dia. (mm) | Actuator for ball valve with HiCo-seats at Δp (bar) | | | | |
|-----|----------|-----------------|--|-----------------|-----------------|-----------------|-----------------|-----------------|-----------------|---|-----------------|-----------------|-----------------|-----------------|
| | | | 10 | 20 | 30 | 40 | 50 | | | 10 | 20 | 30 | 40 | 50 |
| SKV | 25 | 15 | A13-SCL | A13-SCL | A13-SCL | A13-SCL | A13-SCL | 25 | 15 | A13-SCL | A13-SCL | A13-SCL | A13-SCL | A23-SC |
| | 40 | 15 | A13-SCL | A13-SCL | A13-SCL | A23-SCL | A23-SCL | 40 | 15 | A13-SC | A13-SCL | A23-SC | A23-SC | A23-SC |
| | 50 | 20 | A23-SC | A23-SC | A23-SC | A23-SC | A23-SC | 50 | 20 | A23-SC | A23-SC | A23-SC | A23-SC | A23-SC |
| SKV | 80 | 25 | A23-SC | A23-SC | A23-SC | A24-SC | A24-SC | 80 | 25 | A24-SC | A24-SC | A24-SC | A33-SC | A33-SCL |
| | 100 | 30 | A23-SC | A24-SC | A24-SC | A24-SC | A33-SC | 100 | 30 | A24-SC | A33-SC | A33-SC | A33-SC | A34-SC |
| | 125 | 35 | A33-SC | A33-SC | A33-SC | A33-SC | A34-SC | 125 | 35 | A33-SC | A33-SC | A34-SC | A34-SC | A34-SC |
| | 150 | 40 | A33-SC | A33-SC | A34-SC | A34-SC | A34-SC | 150 | 40 | A34-SC | A34-SC | A43-SC | A43-SC | A43-SC |
| | 200 | 50 | A34-SC | A34-SC | A43-SC | A43-SC | A43-SC | 200 | 50 | A34-SC | A43-SC | A44-SC | A44-SC | |
| | 250 | 70 | A43-SC | A43-SC | A44-SC | A44-SC | A44-SC | 250 | 70 | A44-SC | A44-SC | | | |
| | 300 | 80 | A43-SC | A44-SC | A44-SC | | | 300 | 80 | A44-SC | | | | |
| | 350 | 90 | | | | | | 350 | 90 | | | | | |
| | 400 | 100 | | | | | | 400 | 100 | | | | | |
| | SKVT | 450 | 100 | A44-SC | GP-130S-435A/C3 | GP-130S-635A/C6 | GP-160S-535A/C2 | GP-160S-585A/C3 | 450 | 80 | GP-130S-485A/C1 | GP-130S-635A/C6 | GP-160S-585A/C3 | GP-160S-685A/C4 |
| 500 | | 80 | A44-SC | GP-130S-435A/C3 | GP-130S-635A/C6 | GP-160S-535A/C2 | GP-160S-585A/C3 | 500 | 80 | GP-130S-485A/C1 | GP-130S-635A/C6 | GP-160S-585A/C3 | GP-160S-685A/C4 | GP-161S-735A/C5 |

SC = Spring to close

Note! The GP actuators in this table are specified for on/off valves.



Selection table, pneumatic actuators type A-SO (air supply min. 5,5 bar)

| | Valve DN | Shaft dia. (mm) | Actuator for ball valve with PTFE 53-seats at Δp (bar) | | | | | Valve DN | Shaft dia. (mm) | Actuator for ball valve with HiCo-seats at Δp (bar) | | | | |
|-----|----------|-----------------|--|-----------------|-----------------|-----------------|-----------------|-----------------|-----------------|---|-----------------|-----------------|-----------------|-----------------|
| | | | 10 | 20 | 30 | 40 | 50 | | | 10 | 20 | 30 | 40 | 50 |
| SKV | 25 | 15 | A13-SO | A13-SO | A13-SO | A13-SO | A13-SO | 25 | 15 | A13-SO | A13-SO | A13-SO | A13-SO | A13-SO |
| | 40 | 15 | A13-SO | A13-SO | A13-SO | A13-SO | A23-SO | 40 | 15 | A13-SO | A13-SO | A13-SO | A23-SO | A23-SO |
| | 50 | 20 | A23-SO | A23-SO | A23-SO | A23-SO | A23-SO | 50 | 20 | A23-SO | A23-SO | A23-SO | A23-SO | A23-SO |
| SKV | 80 | 25 | A23-SO | A23-SO | A23-SO | A24-SO | A24-SO | 80 | 25 | A24-SO | A24-SO | A24-SO | A24-SO | A24-SO |
| | 100 | 30 | A23-SO | A24-SO | A24-SO | A24-SO | A33-SO | 100 | 30 | A24-SO | A33-SO | A33-SO | A33-SO | A34-SO |
| | 125 | 35 | A33-SO | A33-SO | A33-SO | A33-SO | A34-SO | 125 | 35 | A33-SO | A34-SO | A34-SO | A34-SO | A34-SO |
| | 150 | 40 | A33-SO | A33-SO | A34-SO | A34-SO | A34-SO | 150 | 40 | A34-SO | A34-SO | A43-SO | A43-SO | A43-SO |
| | 200 | 50 | A34-SO | A34-SO | A43-SO | A43-SO | A43-SO | 200 | 50 | A34-SO | A43-SO | A44-SO | A44-SO | A44-SO |
| | 250 | 70 | A43-SO | A43-SO | A44-SO | A44-SO | A44-SO | 250 | 70 | A44-SO | A44-SO | | | |
| | 300 | 80 | A43-SO | A44-SO | | | | 300 | 80 | A44-SO | | | | |
| | 350 | 90 | | | | | | 350 | 90 | | | | | |
| | 400 | 100 | | | | | | 400 | 100 | | | | | |
| | SKVT | 450 | 80 | A44-SO | GP-085S-385A/O1 | GP-100S-535A/O1 | GP-130S-535A/O1 | GP-130S-585A/O1 | 450 | 80 | GP-085S-385A/O1 | GP-100S-535A/O1 | GP-130S-585A/O1 | GP-130S-585A/O1 |
| 500 | | 80 | A44-SO | GP-085S-385A/O1 | GP-100S-535A/O1 | GP-130S-535A/O1 | GP-130S-585A/O1 | 500 | 80 | GP-085S-385A/O1 | GP-100S-535A/O1 | GP-130S-585A/O1 | GP-130S-585A/O1 | GP-130S-635A/O1 |

SO = Spring to open

Note! The GP actuators in this table are specified for on/off valves.

Selection table, pneumatic actuators type A-SO (air supply min. 4 bar)

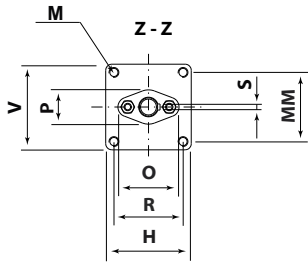
| | Valve DN | Shaft dia. (mm) | Actuator for ball valve with PTFE 53-seats at Δp (bar) | | | | | Valve DN | Shaft dia. (mm) | Actuator for ball valve with HiCo-seats at Δp (bar) | | | | |
|-----|----------|-----------------|--|-----------------|-----------------|-----------------|-----------------|-----------------|-----------------|---|-----------------|-----------------|-----------------|-----------------|
| | | | 10 | 20 | 30 | 40 | 50 | | | 10 | 20 | 30 | 40 | 50 |
| SKV | 25 | 15 | A13-SOL | A13-SOL | A13-SOL | A13-SOL | A13-SOL | 25 | 15 | A13-SOL | A13-SOL | A13-SOL | A13-SOL | A23-SOL |
| | 40 | 15 | A13-SOL | A13-SOL | A13-SOL | A23-SOL | A23-SOL | 40 | 15 | A13-SOL | A13-SOL | A23-SOL | A23-SOL | A23-SOL |
| | 50 | 20 | A23-SOL | A23-SOL | A23-SOL | A23-SOL | A23-SOL | 50 | 20 | A23-SOL | A23-SOL | A23-SOL | A23-SOL | A23-SOL |
| SKV | 80 | 25 | A23-SOL | A23-SOL | A23-SOL | A24-SOL | A24-SOL | 80 | 25 | A24-SOL | A24-SOL | A24-SOL | A24-SOL | A24-SOL |
| | 100 | 30 | A23-SOL | A24-SOL | A24-SOL | A24-SOL | A33-SOL | 100 | 30 | A24-SOL | A33-SOL | A33-SOL | A33-SOL | A34-SOL |
| | 125 | 35 | A33-SOL | A33-SOL | A33-SOL | A33-SOL | A34-SOL | 125 | 35 | A33-SOL | A33-SOL | A34-SOL | A34-SOL | A34-SOL |
| | 150 | 40 | A33-SOL | A33-SOL | A34-SOL | A34-SOL | A34-SOL | 150 | 40 | A34-SOL | A34-SOL | A43-SOL | A43-SOL | A43-SOL |
| | 200 | 50 | A34-SOL | A34-SOL | A43-SOL | A43-SOL | A43-SOL | 200 | 50 | A34-SOL | A43-SOL | A44-SOL | A44-SOL | |
| | 250 | 70 | A43-SOL | A43-SOL | A44-SOL | A44-SOL | A44-SOL | 250 | 70 | A44-SOL | A44-SOL | | | |
| | 300 | 80 | A43-SOL | A44-SOL | | | | 300 | 80 | A44-SOL | | | | |
| | 350 | 90 | | | | | | 350 | 90 | | | | | |
| | 400 | 100 | | | | | | 400 | 100 | | | | | |
| | SKVT | 450 | 80 | GP-085S-385A/O1 | GP-100S-585A/O1 | GP-130S-585A/O1 | GP-130S-635A/O1 | GP-130S-685A/O1 | 450 | 80 | GP-085S-435A/O1 | GP-130S-585A/O1 | GP-130S-685A/O1 | GP-130S-735A/O1 |
| 500 | | 80 | GP-085S-385A/O1 | GP-100S-585A/O1 | GP-130S-585A/O1 | GP-130S-635A/O1 | GP-130S-685A/O1 | 500 | 80 | GP-085S-435A/O1 | GP-130S-585A/O1 | GP-130S-685A/O1 | GP-130S-735A/O1 | GP-160S-685A/O1 |

SO = Spring to open

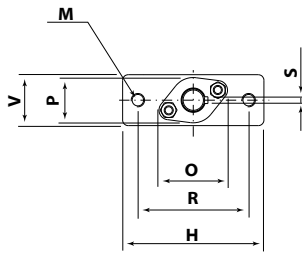
Note! The GP actuators in this table are specified for on/off valves.



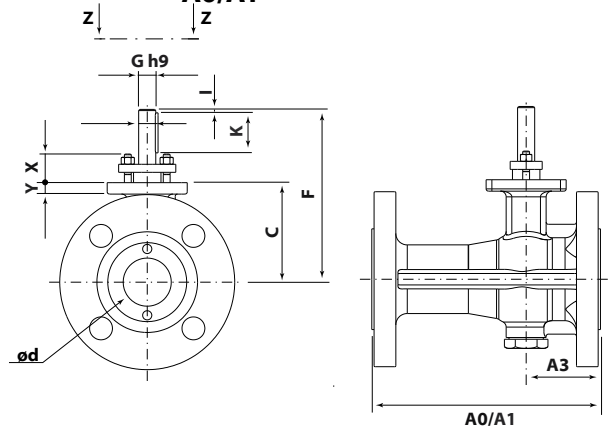
DN25 - 40



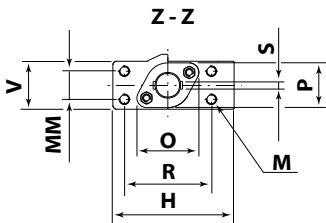
DN50



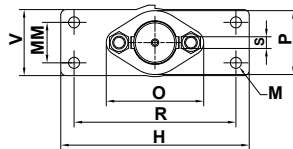
A0/A1



DN80 - 250

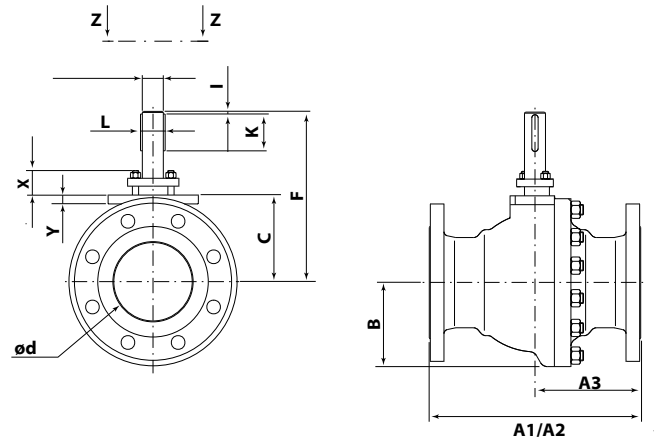
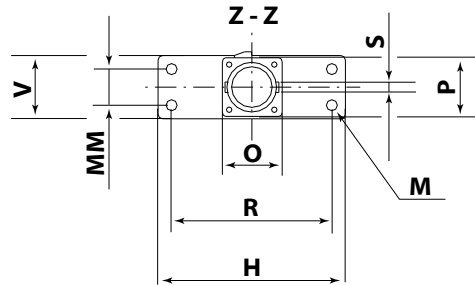


DN300

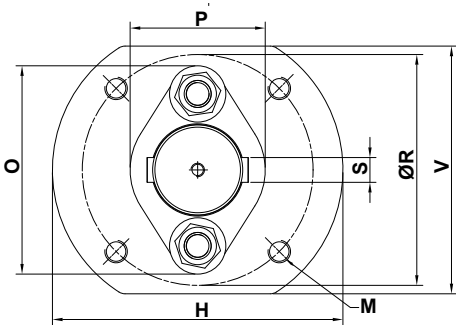


A1/A2

DN350-400



DN450-500



Face to face dimension

A0 = EN558:2022 Series 1 (DN25-DN50, PN10-40, Class 150- 300)

A1 = EN558:2022 Series 4 (DN25-DN50, PN 10-40, Class 150- 300)

A1 = EN558:2022 Series 4 (DN80-DN500, PN10-25, Class 150)

A2 = EN558:2022 Series 12 (DN450-DN500, PN10-25, Class 150)

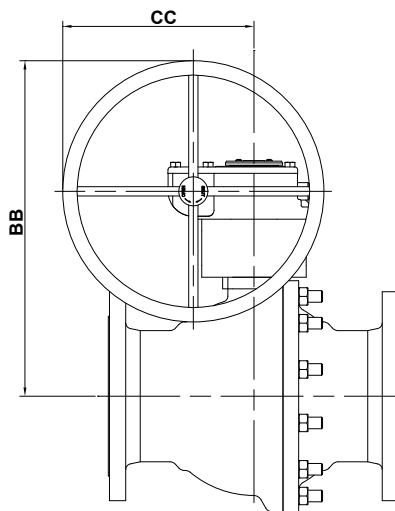
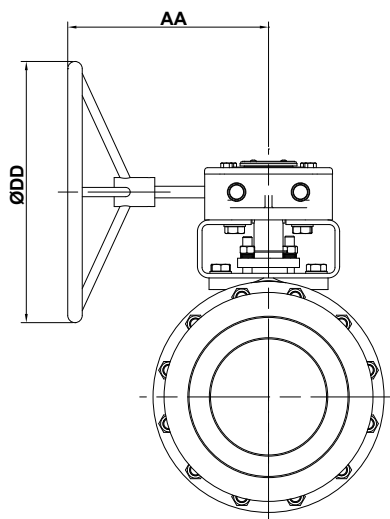


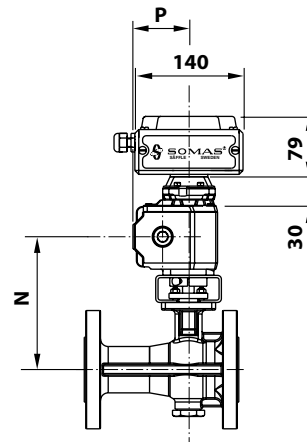
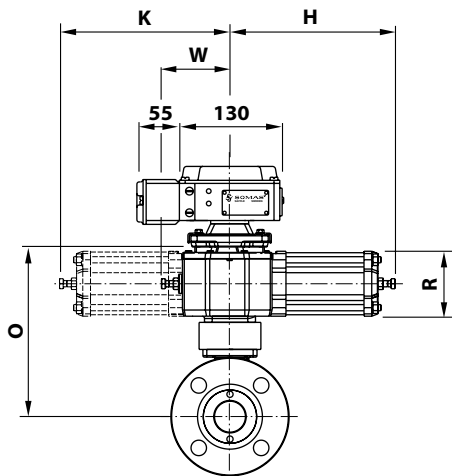
| | DN | Somas standard supply | | Somas tillval supply | | | Ball valve type SKV | | | | | | | | | | | | | | | | | | | Weight |
|------|-----|-----------------------|-----|----------------------|-----|-------|---------------------|-----|-----|-------|-----|-----|-----|-----|------|-----|------|-----|-----|------|----|-----|-----|----|-----|--------|
| | | A0 | A1 | A1 | A2 | A3 | B | C | ød | F | øG | H | I | K | L | M | MM | O | P | R | øR | S | V | X | Y | |
| SKV | 25 | 160 | - | 165 | - | 60 | - | 80 | 25 | 144 | 15 | 70 | 3 | 35 | 17 | M8 | 56,6 | 50 | 28 | 56,6 | - | 5 | 70 | 25 | 13 | 5,5 |
| | 40 | 200 | - | 190 | - | 65 | - | 87 | 40 | 150 | 15 | 72 | 3 | 35 | 17 | M8 | 56,6 | 50 | 28 | 56,6 | - | 5 | 72 | 25 | 13 | 9,5 |
| | 50 | 230 | - | 216 | - | 75 | - | 101 | 50 | 216 | 20 | 125 | 5 | 45 | 22,5 | M12 | - | 61 | 40 | 98 | - | 6 | 45 | 25 | 13 | 13,5 |
| | 80 | - | 283 | - | - | 141,5 | 100 | 103 | 80 | 185 | 25 | 125 | 3 | 35 | 31 | M10 | 24 | 63 | 45 | 98 | - | 8 | 48 | 30 | 14 | 27 |
| | 100 | - | 305 | - | - | 152,5 | 121 | 123 | 100 | 231 | 30 | 150 | 5 | 50 | 36 | M12 | 24 | 69 | 50 | 123 | - | 8 | 54 | 30 | 15 | 40 |
| | 125 | - | 381 | - | - | 190,5 | 143 | 144 | 125 | 273 | 35 | 150 | 5 | 60 | 41 | M12 | 32 | 75 | 55 | 123 | - | 10 | 60 | 30 | 15 | 60 |
| | 150 | - | 403 | - | - | 201,5 | 160 | 166 | 150 | 325 | 40 | 172 | 5 | 70 | 46 | M16 | 44 | 97 | 70 | 136 | - | 12 | 75 | 50 | 18 | 83 |
| | 200 | - | 502 | - | - | 251 | 199 | 205 | 200 | 387 | 50 | 205 | 4 | 80 | 57 | M20 | 45 | 106 | 88 | 165 | - | 14 | 90 | 50 | 20 | 150 |
| | 250 | - | 568 | - | - | 284 | 243 | 247 | 250 | 459,5 | 70 | 300 | 5 | 100 | 80 | M24 | 60 | 140 | 112 | 250 | - | 20 | 110 | 60 | 24 | 240 |
| | 300 | - | 648 | - | - | 324 | 282 | 288 | 300 | 538 | 80 | 354 | 5 | 120 | 90 | M24 | 76 | 183 | 120 | 304 | - | 22 | 124 | 75 | 24 | 371 |
| 350 | - | 762 | - | - | 381 | 328 | 333 | 350 | 590 | 90 | 415 | 5 | 140 | 100 | M30 | 80 | 138 | 138 | 355 | - | 25 | 140 | 70 | 32 | 557 | |
| 400 | - | 838 | - | - | 419 | 370 | 376 | 400 | 663 | 100 | 415 | 5 | 170 | 112 | M30 | 80 | 150 | 150 | 355 | - | 28 | 140 | 72 | 32 | 802 | |
| SKVT | 450 | - | 914 | 864 | 478 | 413.5 | 449 | 450 | 793 | 80 | 258 | 5 | 160 | 90 | M20 | - | 185 | 120 | - | 205 | 22 | 220 | 70 | 28 | 875 | |
| | 500 | - | 991 | 914 | 532 | 434 | 470 | 500 | 814 | 80 | 258 | 5 | 160 | 90 | M20 | - | 185 | 120 | - | 205 | 22 | 220 | 70 | 28 | 952 | |



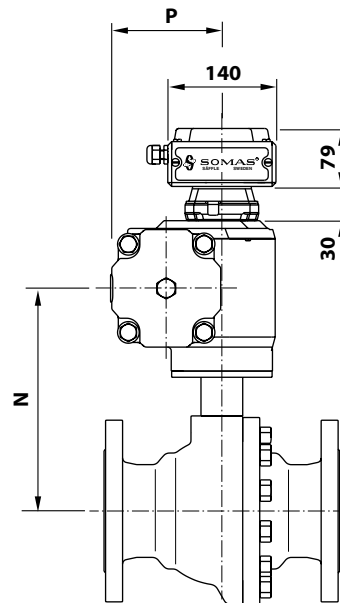
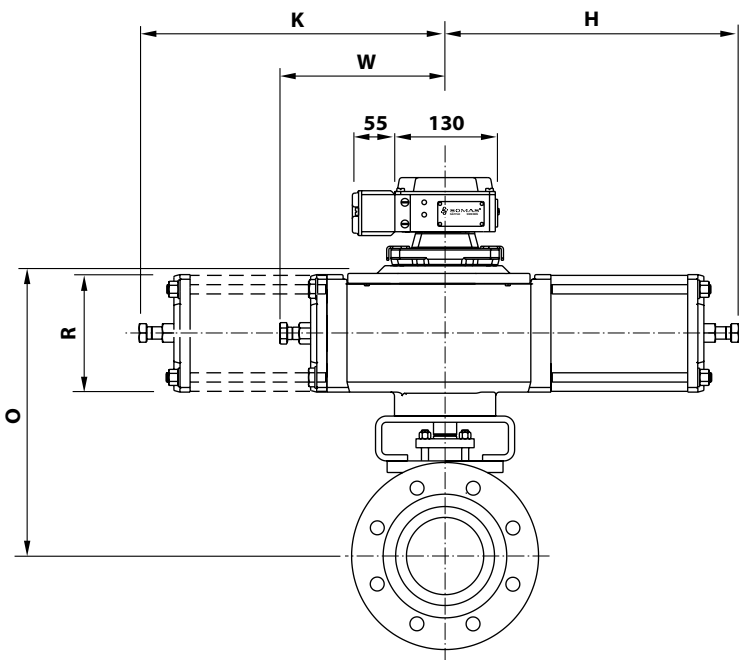
Ball valve type SKV with gear unit

| DN | Type | AA | BB | CC | øDD | Weight |
|-----|---------------|-----|------|-----|-----|--------|
| 25 | AB150N | 158 | 217 | 118 | 150 | 9,5 |
| 40 | AB150N | 158 | 224 | 118 | 150 | 14 |
| 50 | AB215N | 217 | 305 | 152 | 200 | 20 |
| 80 | AB215N | 217 | 287 | 152 | 200 | 35 |
| 100 | AB215N | 217 | 310 | 152 | 200 | 49 |
| 100 | AB550N | 282 | 372 | 221 | 300 | 55 |
| 125 | AB550N | 282 | 405 | 221 | 300 | 75 |
| 125 | AB880N | 275 | 431 | 261 | 350 | 83 |
| 150 | AB550 N | 282 | 447 | 221 | 300 | 98 |
| 150 | AB880N | 275 | 473 | 261 | 350 | 106 |
| 150 | AB2000N | 318 | 562 | 303 | 500 | 122 |
| 200 | AB880N | 275 | 522 | 261 | 350 | 176 |
| 200 | AB2000N | 318 | 611 | 303 | 500 | 189 |
| 250 | AB2000N | 318 | 663 | 303 | 500 | 278 |
| 250 | AB1950N/PR4 | 398 | 712 | 430 | 600 | 295 |
| 250 | AB3000N/ PR4 | 410 | 719 | 440 | 500 | 308 |
| 300 | AB2000N | 318 | 714 | 303 | 500 | 409 |
| 300 | AB1950N/PR 4 | 398 | 763 | 430 | 600 | 425 |
| 300 | AB3000N/PR 4 | 410 | 770 | 440 | 600 | 429 |
| 300 | AB6800N/PR 6 | 451 | 767 | 482 | 600 | 448 |
| 350 | AB3000N/PR 4 | 410 | 825 | 440 | 600 | 610 |
| 350 | AB6800N/PR 6 | 451 | 822 | 482 | 600 | 634 |
| 350 | AB2000N/PR 10 | 471 | 848 | 509 | 600 | 704 |
| 400 | AB3000N/PR 4 | 410 | 868 | 440 | 600 | 860 |
| 400 | AB6800N/PR 4 | 451 | 865 | 482 | 600 | 876 |
| 400 | AB200N/PR 10 | 471 | 891 | 509 | 600 | 947 |
| 400 | AB250N/PR 10 | 511 | 891 | 556 | 600 | 1031 |
| 450 | AB1950N/PR 4 | 398 | 1004 | 430 | 600 | 613 |
| 450 | AB3000N/PR 6 | 410 | 1011 | 440 | 500 | 606 |
| 450 | AB6800N/PR 6 | 451 | 1008 | 482 | 600 | 839 |
| 450 | AB2000N | 471 | 1034 | 509 | 600 | 948 |
| 500 | AB1950N/PR 4 | 398 | 1025 | 430 | 500 | 933 |
| 500 | AB3000N/PR 6 | 410 | 1032 | 440 | 500 | 939 |
| 500 | AB6800N/PR 6 | 451 | 1029 | 482 | 600 | 1030 |
| 500 | A200N/PR10 | 471 | 1055 | 509 | 600 | 1103 |





DN25 - 50



DN80 - 500



Ball valve type SKV with actuator type A-DA

| DN | Type | H | K | N | O | P | R | W | Weight |
|-----|------|-----|-----|-----|-----|-----|-----|-----|--------|
| 25 | A11 | 215 | - | 175 | 220 | 73 | 84 | 90 | 10 |
| 25 | A13 | 250 | - | 175 | 220 | 83 | 106 | 90 | 12 |
| 40 | A11 | 215 | - | 180 | 230 | 73 | 84 | 90 | 15 |
| 40 | A13 | 250 | - | 180 | 230 | 83 | 106 | 90 | 17 |
| 50 | A11 | 215 | - | 230 | 280 | 73 | 84 | 90 | 18 |
| 50 | A13 | 250 | - | 230 | 280 | 83 | 106 | 90 | 20 |
| 50 | A21 | 255 | - | 250 | 315 | 94 | 106 | 140 | 23 |
| 50 | A22 | 255 | 260 | 250 | 315 | 94 | 106 | - | 25 |
| 80 | A21 | 255 | - | 225 | 290 | 94 | 106 | 140 | 36 |
| 80 | A22 | 255 | 260 | 225 | 290 | 94 | 106 | - | 37 |
| 80 | A23 | 305 | - | 225 | 290 | 117 | 106 | 140 | 43 |
| 80 | A24 | 305 | 310 | 225 | 290 | 117 | 152 | - | 44 |
| 100 | A22 | 255 | 260 | 245 | 310 | 94 | 106 | - | 51 |
| 100 | A23 | 305 | - | 245 | 310 | 117 | 152 | 140 | 56 |
| 100 | A24 | 305 | 310 | 245 | 310 | 117 | 152 | - | 57 |
| 100 | A31 | 380 | - | 295 | 380 | 144 | 152 | 215 | 65 |
| 100 | A32 | 380 | 395 | 295 | 380 | 144 | 152 | - | 71 |
| 100 | A33 | 470 | - | 295 | 380 | 183 | 228 | 215 | 78 |
| 125 | A31 | 380 | - | 325 | 410 | 144 | 152 | 215 | 85 |
| 125 | A32 | 380 | 395 | 325 | 410 | 144 | 152 | - | 91 |
| 125 | A33 | 470 | - | 325 | 410 | 183 | 228 | 215 | 98 |
| 150 | A31 | 380 | - | 365 | 450 | 144 | 152 | 215 | 108 |
| 150 | A32 | 380 | 395 | 365 | 450 | 144 | 152 | - | 114 |
| 150 | A33 | 470 | - | 365 | 450 | 183 | 228 | 215 | 121 |
| 150 | A41 | 550 | - | 410 | 535 | 211 | 228 | 315 | 160 |
| 150 | A42 | 545 | 560 | 410 | 535 | 211 | 228 | - | 175 |
| 150 | A43 | 680 | - | 410 | 535 | 279 | 354 | 315 | 235 |
| 200 | A32 | 380 | 395 | 415 | 500 | 144 | 152 | - | 190 |
| 200 | A33 | 470 | - | 415 | 500 | 183 | 228 | 215 | 195 |
| 200 | A41 | 550 | - | 460 | 585 | 211 | 228 | 315 | 230 |
| 200 | A42 | 545 | 560 | 460 | 585 | 211 | 228 | - | 245 |
| 200 | A43 | 680 | - | 460 | 585 | 279 | 354 | 315 | 300 |
| 200 | A44 | 680 | 695 | 460 | 585 | 279 | 354 | - | 315 |
| 250 | A41 | 550 | - | 510 | 635 | 211 | 228 | 315 | 320 |
| 250 | A42 | 545 | 560 | 510 | 635 | 211 | 228 | - | 335 |
| 250 | A43 | 680 | - | 510 | 635 | 279 | 354 | 315 | 390 |
| 250 | A51 | 745 | - | 555 | 740 | 314 | 354 | 370 | 445 |
| 250 | A52 | 745 | 695 | 555 | 740 | 314 | 354 | - | 485 |
| 300 | A41 | 550 | - | 560 | 690 | 211 | 228 | 315 | 435 |
| 300 | A42 | 545 | 560 | 560 | 690 | 211 | 228 | - | 450 |
| 300 | A43 | 680 | - | 560 | 690 | 279 | 354 | 315 | 505 |
| 300 | A44 | 680 | 695 | 560 | 690 | 279 | 354 | - | 520 |
| 300 | A51 | 745 | - | 605 | 790 | 314 | 354 | 370 | 565 |
| 300 | A52 | 745 | 760 | 605 | 790 | 314 | 354 | - | 600 |
| 350 | A51 | 745 | - | 650 | 835 | 314 | 354 | 370 | 760 |
| 350 | A52 | 745 | 760 | 650 | 835 | 314 | 354 | - | 795 |
| 400 | A51 | 745 | - | 695 | 880 | 314 | 354 | 370 | 1005 |
| 400 | A52 | 745 | 760 | 695 | 880 | 314 | 354 | - | 1040 |

SKV

For units with the positioner type SP405, add 2 kg
For units with the positioner type SPE405, add 3 kg

Ball valve type SKV with actuator type A-SC/SO

| DN | Type | H | K | N | O | P | R | W | Weight |
|-----|--------|-----|-----|-----|-----|-----|-----|-----|--------|
| 25 | A13-X | 325 | - | 175 | 220 | 83 | 106 | 90 | 14 |
| 25 | A23-X | 415 | - | 205 | 265 | 117 | 152 | 140 | 23 |
| 40 | A13-X | 325 | - | 180 | 230 | 83 | 106 | 90 | 18 |
| 40 | A23-X | 415 | - | 210 | 275 | 117 | 152 | 140 | 27 |
| 50 | A23-X | 415 | - | 250 | 315 | 117 | 152 | 140 | 31 |
| 80 | A23-X | 415 | - | 225 | 290 | 117 | 152 | 140 | 43 |
| 80 | A24-X | 415 | 420 | 225 | 290 | 117 | 152 | - | 53 |
| 80 | A-33-X | 660 | - | 280 | 367 | 183 | 228 | 215 | 64 |
| 100 | A23-X | 415 | - | 245 | 310 | 117 | 152 | 140 | 57 |
| 100 | A24-X | 415 | 420 | 245 | 310 | 117 | 152 | - | 67 |
| 100 | A33-X | 660 | - | 295 | 380 | 183 | 228 | 215 | 103 |
| 100 | A34-X | 665 | 680 | 295 | 380 | 183 | 228 | - | 131 |
| 125 | A33-X | 660 | - | 325 | 410 | 183 | 228 | 215 | 123 |
| 125 | A34-X | 665 | 680 | 325 | 410 | 183 | 228 | - | 155 |
| 150 | A33-X | 660 | - | 365 | 450 | 183 | 228 | 215 | 150 |
| 150 | A34-X | 665 | 680 | 365 | 450 | 183 | 228 | - | 175 |
| 150 | A43-X | 920 | - | 410 | 535 | 279 | 354 | 315 | 250 |
| 200 | A34-X | 665 | 680 | 415 | 500 | 183 | 228 | - | 245 |
| 200 | A43-X | 920 | - | 460 | 585 | 279 | 354 | 315 | 315 |
| 200 | A44-X | 925 | 935 | 460 | 585 | 279 | 354 | - | 370 |
| 250 | A43-X | 920 | - | 510 | 635 | 279 | 354 | 315 | 405 |
| 250 | A44-X | 925 | 935 | 510 | 635 | 279 | 354 | - | 460 |
| 300 | A43-X | 920 | - | 560 | 690 | 279 | 354 | 315 | 520 |
| 300 | A44-X | 925 | 935 | 560 | 690 | 279 | 354 | - | 575 |

Ball valve type SKV with actuator type A-SC/SO

| DN | Type | H | K | N | O | P | R | W | Weight |
|-----|-------|-----|-----|-----|-----|-----|-----|---|--------|
| 450 | A44-X | 925 | 935 | 802 | 928 | 279 | 354 | - | 1098 |
| 500 | A44-X | 925 | 935 | 802 | 928 | 279 | 354 | - | 1175 |

X = SC - Spring to close
X = SO - Spring to open
For units with the positioner type SP405, add 2 kg
For units with the positioner type SPE405, add 3 kg

Ball valve type SKVT with actuator type A-DA

| DN | Type | H | K | N | O | P | R | W | Weight |
|-----|------|-----|-----|-----|------|-----|-----|-----|--------|
| 450 | A41 | 550 | - | 802 | 928 | 211 | 228 | 315 | 945 |
| 450 | A42 | 545 | 560 | 802 | 928 | 211 | 228 | - | 960 |
| 450 | A43 | 680 | - | 802 | 929 | 279 | 354 | 330 | 1023 |
| 450 | A44 | 680 | 695 | 802 | 929 | 279 | 354 | - | 1032 |
| 450 | A51 | 745 | - | 847 | 1034 | 314 | 354 | 470 | 1088 |
| 450 | A52 | 745 | 760 | 847 | 1034 | 314 | 354 | - | 1123 |
| 500 | A-42 | 545 | 560 | 823 | 949 | 211 | 228 | - | 1037 |
| 500 | A-43 | 680 | - | 823 | 950 | 279 | 354 | 315 | 1100 |
| 500 | A-44 | 680 | 695 | 823 | 950 | 279 | 354 | - | 1109 |
| 500 | A52 | 745 | 760 | 868 | 1055 | 314 | 354 | - | 1200 |
| 500 | A51 | 745 | - | 868 | 1055 | 314 | 354 | 370 | 1165 |

For units with the positioner type SP405, add 2 kg
For units with the positioner type SPE405, add 3 kg

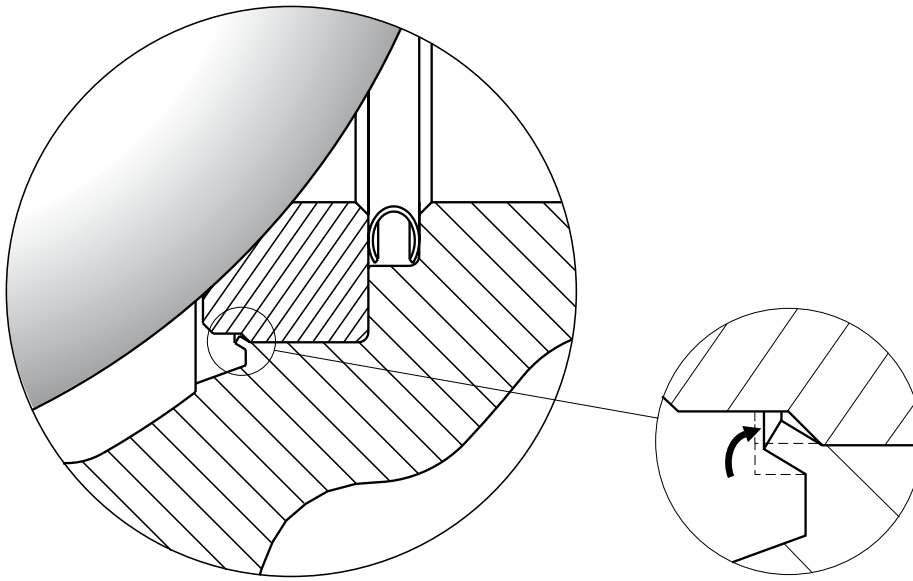


Fig. 1

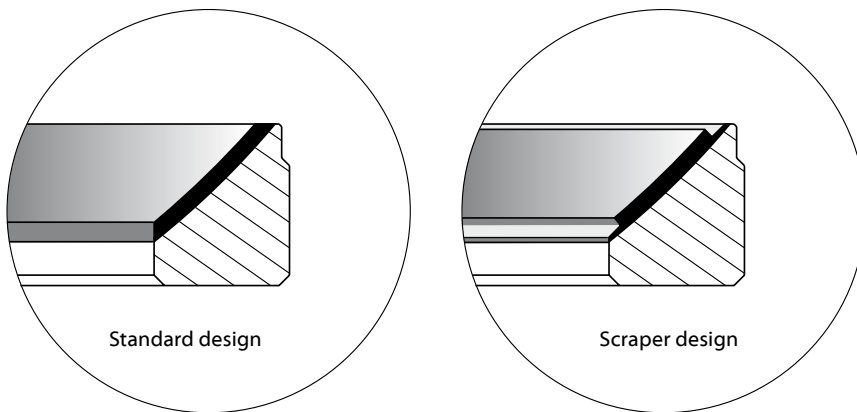


Fig. 2



Flange standard

Somas ball valves type SKV are equipped with flanges. Valves within the dimension range DN25 - 50 can be drilled according to EN PN25, PN40 as well ASME B16.5:2003 Class 150, Class 300.

Valves within the dimension range DN80 - 500 can be drilled for EN PN10, PN16 and PN25 as well ASME B16.5:2003 Class 150.

When ordering, please always state the pressure rating of the counter flanges. See the valve specification system code 13.

Other flange designs can be provided on request.

Alternative seat design

Locked seats: This design is used for applications where the media, by entering behind the seats, will block the rotary motion. The locking is done by pressing the lip in the body on a number of spots towards the seat (see fig. 1).

Scraping seats: For applications where fluid builds up scaling inside the valve. The sharp edge of the scraping seat will scrape off the sealing area (see fig. 2). A combination of locked- and scraping design is also possible.

Actuators and accessories

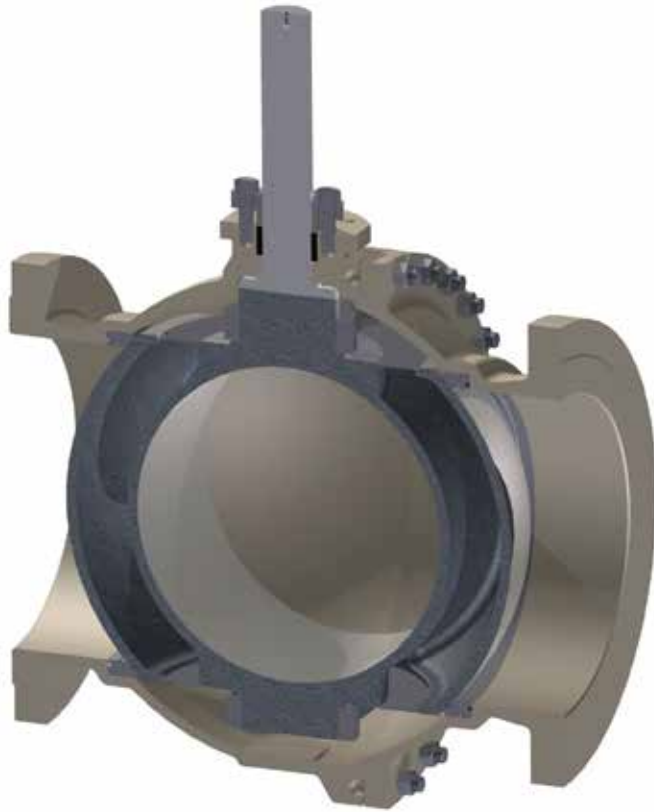
The valves can be fitted with Somas manual, on/off or control actuators in accordance with the selection table. The valves will then be delivered as tested units ready for installation.

In the documents library on www.somas.se there is also information about positioners, limit switches and solenoid valves.

We can also fit other types of actuators and accessories in accordance with your specification.

Further technical information

Technical data for the materials used in the Somas valves, flange standard, steam data, etc. can be found in documents library on www.somas.se



SKVT Trunnion



Ordering

State desired valve according to the valve specification system below as well as type of actuator, positioner and accessories.

SKV - L 5 - A B B - A 1 1 - DN... - D... - B... - PN...

1 2 3 4 5 6 7 8 9 10 11 12 13

Valve specification system

| | | |
|--|---|--|
| 1 Type of valve Flanged design SKV - Floating ball SKVT - Supported ball | 5 Material – ball B = CF8M/1.4408 alt. 1.4401, hard chromed C = CF8M/1.4408 alt. 1.4401, HiCo Gr 6 alt. Gr 21 coated Y = 1.4462 alt. 1.4470, hard chromed | 8 Bearings – valve body/shaft 1 = Without bearing 9 = Inconel 625, Duritex ML coated |
| 2 Valve body design L = Flanged design | 6 Material – seat B = PTFE 53 (50% PTFE + 50% 1.4435 powder (percentage by weight) T = HiCo Gr 6 alt. 1.4404, HiCo Gr 6 alt. Gr 21 coated | 9 Stuffing box 1 = Graphite 2 = PTFE |
| 3 Nominal pressure 5 = PN25 6 = PN40, Class 300 | 7 Material – shaft A = 1.4460 alt. SS 2324-12 Z = 1.4462 | 10 Valve size, DN 11 Shaft diameter |
| 4 Material – valve body A = CF8M / 1.4408 H = 1.4470 | | 12 Actuator mounting flange drilling 13 Drilling, counter flanges, PN/Class |

*Other materials are available on request.
Contact Somas for further information.*

Somas reserves the right to make improvements without prior notice.



Somas.se



LinkedIn

Head office:

Somas Instrument AB

Norrlandsvägen 26

SE-661 40 SÄFFLE

Sweden

Phone: +46 (0)533 69 17 00

E-mail: sales@somas.se

www.somas.se

