

Datasheet

Valve positioner

Type EDP 300 Electro-pneumatic

Si-814 EN

Edition: 2020-04

SIL -

Safety Integrity Level
(up to SIL 2 capable)





Copyright

The copyright on this installation and maintenance datasheet is held by Somas Instrument AB. The instructions and drawings contained may not be fully or partially copied, distributed or used in any unauthorized way for competitive purposes or passed on to others.

Sales and distribution

Somas Instrument AB
P.O. Box 107
SE-661 23 SÄFFLE, Sweden
Visiting address: Norrlandsv. 26-28

Phone: +46 533 69 17 00
Mail to: sales@somas.se
Internet: www.somas.se

SOMAS reserves the right to make improvements without prior notice.



Product Information

- High air capacity and low air consumption
- Robust aluminium housing
- Non - contact magnetic measurement of valve position
- Easy handling - Graphical display, ABB HMI
- Adaptive control with parameter monitoring
- Pressure sensors for measurement of friction and stiction (option)
- HART Communication - Supports FDT/DTM and EDDL technology.
- Same mounting kits as ABB TZID-C
- SIL - Partial Stroke Test
- Remote sensor (option)

Technical specification

Case

Material	Aluminium
Protection class	IP65
Electric connection	M20x1.5
Pneumatic connection	G 1/4"
Weight	2.4 kg

Input

Signal	4-20 mA + HART 5/7
---------------	--------------------

Output

Air capacity	50 kg/h at 10 bar supply pressure
Air consumption	< 0.03 kg/h independent of supply pressure
Function	Double or single acting

Air supply

Instrument air	Oil, water and dust free according to DIN/ISO 8573-1, Class 3
Supply pressure	1.4-10 bar (e)

Others

Ambient temp.	-40 to +85°C
Function	Linear, logarithmic or with 20 freely selected points
Deviation	≤ 0.5 %
Resolution	10 000 steps (A/D conversion)
Influence ambient temp.	≤ 0.5 % / 10°K
Ref. temperature	20°C
Vibration resistance	< 1% up to 10 g and 80Hz

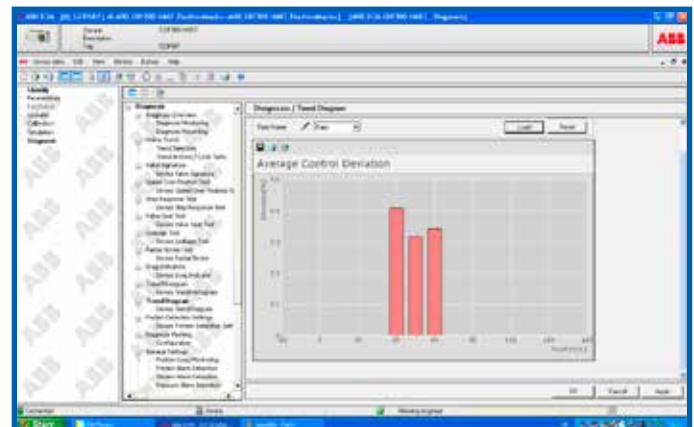
For more detailed information, see ABB datasheet.

Options

4-20mA, 2-wire analog feedback

	Digital feed-back
Limit switches:	(SPDT/proximity Namur)
Explosion protections:	EEx ia/II C EEx n A II C
Approvals:	FM CSA ATEX IECEX GOST, Russia NEPSI, China KOSHA, Korea CEPEL, Brazil
Pressure sensors	
Natural gas operation	
Gauge block	
Fail freeze function	
Universal analog input (extension of diagnostics)	
Shut down module (SIL)	
SIL certified	
Stainless steel housing	
Remote sensor	

Example of diagnostics via DTM file



Diagnostics

- According to Namur NE107 classification
- Positioning time-out
- Valve signature
- Step test
- Leakage test
- Speed over position test
- Trends
- Pre-define testcycles according to EN 61514-2
- Histograms
- Event and diagnosis history tables
- etc.



Somas.se



LinkedIn

Concern and head office:

Somas Instrument AB

Norrlandsvägen 26

SE-661 40 SÄFFLE

Sweden

Phone: +46 (0)533 69 17 00

E-mail: sales@somas.se

www.somas.se

