

Datasheet

Manual actuators

Si-502 EN

Edition: 2024-05

- Hand lever
- Gear unit





Copyright

The copyright on this installation and maintenance datasheet is held by Somas Instrument AB. The instructions and drawings contained may not be fully or partially copied, distributed or used in any unauthorized way for competitive purposes or passed on to others.

Sales and distribution

Somas Instrument AB
P.O. Box 107
SE-661 23 SÄFFLE, Sweden
Visiting address: Norrlandsv. 26-28

Phone: +46 533 69 17 00
Mail to: sales@somas.se
Internet: www.somas.se



Product Information

Somas manufactures quarter turn valves which can be opened or closed very quickly.

Hand lever type HSR is only sold with Somas butterfly valves with soft seats and for the valve size of DN 80 - 125. It is not advisable in many systems to increase or decrease flow too rapidly and the use of a lever with valves – sizes larger than DN 80 – should be considered very carefully.

Use a gear unit in case of uncertainty.

- Rotork gear units are manufactured in international standards according to ISO/DIS 22109.
- Rotork standard gear units are painted according to Intercure99 60my
- Rotork marine gear units are painted according to C5M/ISO 12944-2
- Rotork Fire safe gears are painted according to Intercure99 60my

For more information about painting on gear units, contact Somas.



Hand lever

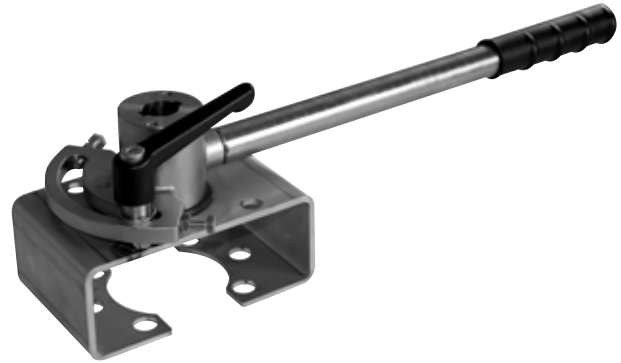
Type HSR

Hand lever type HSR is only sold with Somas butterfly valves with soft seats and for the valve size of DN 80 - 125. It is not advisable in many systems to increase or decrease flow too rapidly and the use of a lever with valves – sizes larger than DN 80 – should be considered very carefully. Use a gear unit in case of uncertainty.

The lever has adjustable travel stops and is lockable in open / closed position.

The hand lever type HSR is made from stainless steel and is delivered unpainted.

See the data sheet for each butterfly valve to get the correct measurements.



Hand lever with limit switch

The hand levers can be equipped with limit transmitters for electrical indication. Check with Somas to get more information about the selection of switches.

Option

Limit switch Proximity sensor, VDI/VDE 3845, Lockable design and ATEX.





Gear unit

Gear unit Rotork

The gear unit is designed for use with all types of Somas valves. It is available in several sizes in order to cover all valve dimensions.

The gear unit has adjustable travel stops and shows the valve position by an indication on top of the gear.

The gear unit has protection class IP67 and is delivered epoxy painted.

See the data sheet for each valve to get the correct measurements.

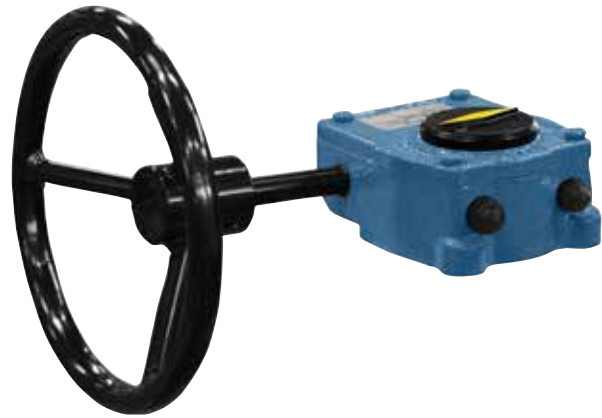
All Rotork gear units are in ATEX standard.

Option

SS IP68

Fire safe

For all gear units applies 4 wedge tracks as an option.



Gear unit lockable design

The gear units can be equipped with locking flanges in order to lock the valve in any position.

The picture shows the gear in locked position; closed valve.

The locking flange can be mounted afterwards on existing units.

Are delivered epoxy painted or AISI 316L.

Chain wheel

Gears units can be equipped with chain manoeuvres for mounting at higher heights and is used for opening and closing the valve.

Delivered as epoxy painted, chain available in galvanized or AISI 316L.





Limit switch Proximity sensor

The gear units can be equipped with limit switches and transmitters for electrical indication.

Assembly according to VDI/VDE 3845 (NAMUR)

Check with Somas to get more information about the selection of switches.

See the data sheet for each valve to get the correct measurements.



Gear units for marine applications

Gear units for “on-deck” applications are painted according to the C5M/ISO 12944-2.

Gear unit in protection class IP68. Suitable for “on-deck” applications, oil rigs and land-based installations.

The shaft is AISI 303.





Mounting options

Gear unit

The standard mounting for gear unit is perpendicular to the pipeline as shown in position A (→ Fig.1).

Always specify mounting position (A or C) when ordering.

The hand actuator is mounted in position A if the position is not stated.

Option

Mounting (B and D) are available as an option on gear unit.

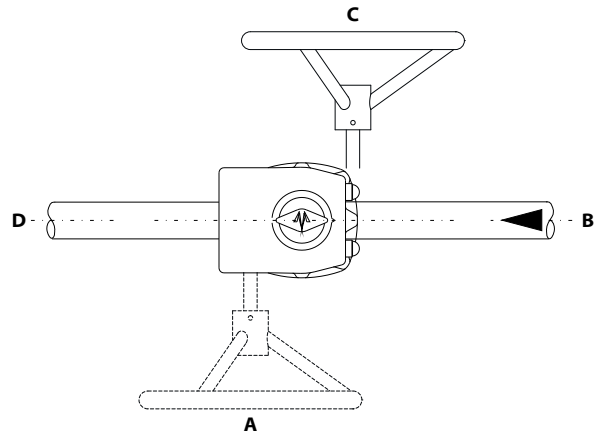


Fig.1 Gear unit

Hand lever

The standard mounting for hand lever is perpendicular to the pipeline as shown in position A (→ Fig.2).

Position C is available on request for hand lever.

Always specify mounting position (A or C) when ordering.

The hand actuator is mounted in position A if the position is not stated.

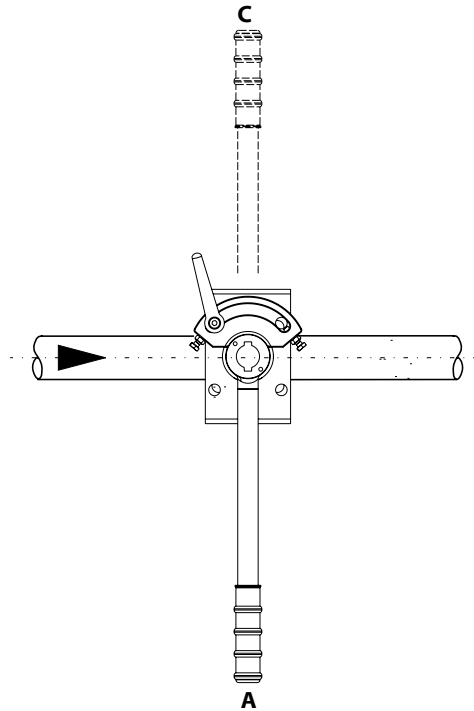


Fig.2 Hand lever

Somas reserves the right to make improvements without prior notice.



Somas.se



LinkedIn

Head office:

Somas Instrument AB
Norrlandsvägen 26
SE-661 40 SÄFFLE
Sweden

Phone: +46 (0)533 69 17 00
E-mail: sales@somas.se
www.somas.se

